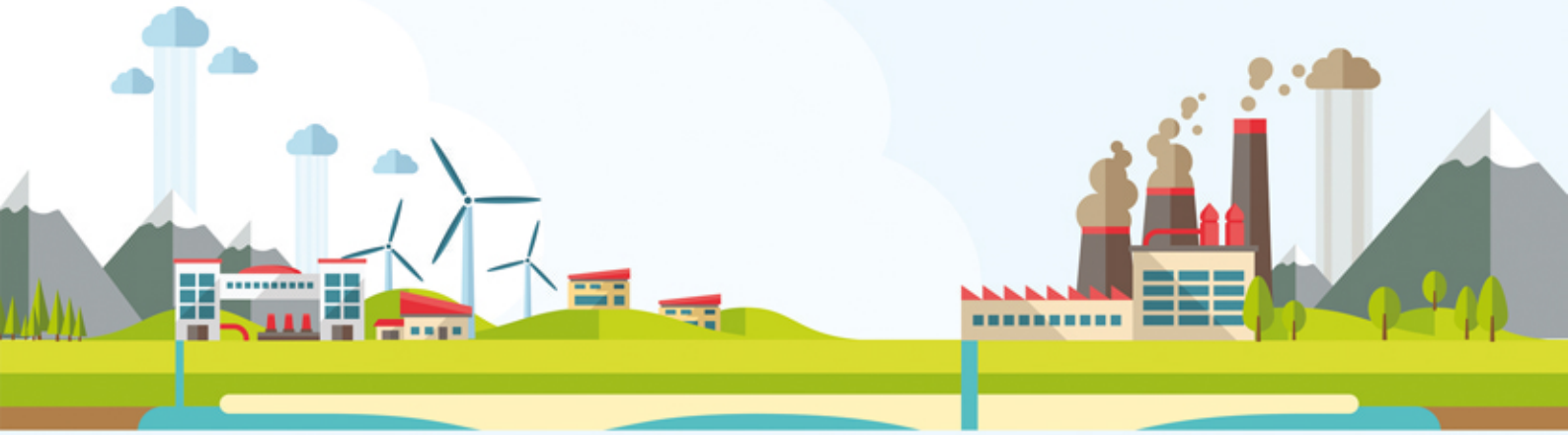




Multiple Closed Metal Mines use MonitorPro to Simplify Managing Multiple Data Types



MonitorPro

A professional environmental and sustainability information management solution, particularly suited for industries related to natural resources. MonitorPro is globally tested and used in water and waste water industries, as well as waste management, metals and mining.

Inmet Mining is a Canadian-based global mining company that produces copper, zinc and gold. They own and operate mining operations in Turkey, Finland, Canada and Spain and also have interests in Papua New Guinea and Panama. Inmet have permit obligations to manage the environmental impacts of all their operations during exploration, construction, operation and post-closure. This brings with it an intensive monitoring and reporting programme with many targets set by the regulators.

Overview

Sustainability Performance is measured using indicators from the Global Reporting Initiative (GRI) and Towards Sustainable Mining (TSM), an initiative of the Mining Association of Canada (MAC), along with several other performance indicators developed by Inmet. All of this clearly involves a need to manage large amounts of data.

Location

In 2009 Inmet Mining in Canada purchased MonitorPro initially for the management of data associated with its closed sites team which currently manages closed mine sites at:



Troilus

A 737 hectare open pit copper and gold mine in Quebec.

Winston Lake

An underground copper and zinc mine in Ontario.

Copper Range

A 8700 hectare underground copper mine in Michigan, USA.

Samatsum

In British Columbia, which closed in 1992.

Sturgeon Lake

In Ontario which closed in 1980

Norbec

An underground copper and zinc mine in Quebec.



Implementation

Prior to using MonitorPro, Inmet's closed sites personnel were using a large number of spreadsheets and Access databases to manage all this information. The process was labour intensive and complex. Prior to install of our system we pre-populated the system with historical data received from Inmet and the system was installed in early 2010 and is now operational. The data currently managed in the system includes data for surface and groundwater, fish and sediment from local water courses, sludge and liquid effluent with data including chemical composition, physical characteristics and toxicity. MonitorPro offers the ability to manage a host of data, and automate the processes of data import and validation. Data can then be scrutinised in a variety of ways in the system and reporting can be carried out in both French and English

"The installation and use of MonitorPro is part of Inmet's commitment of risk management towards our goal of Zero Harm to people, communities, and the environment. MonitorPro helps us manage the varied data of our operations in an efficient and auditable fashion."

Brent Hamblin