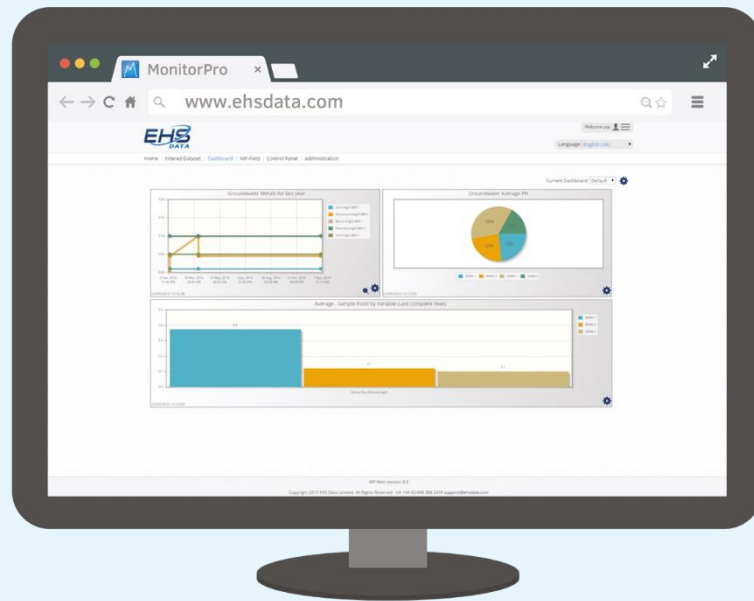


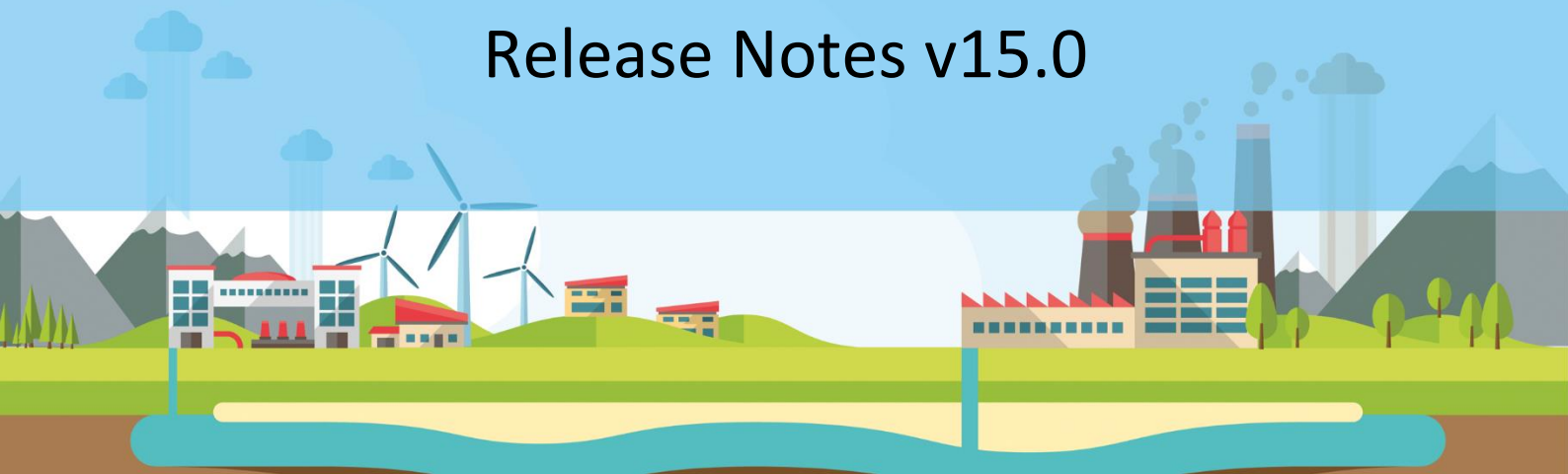
MonitorPro



MonitorPro



MonitorPro Release Notes v15.0



Contents

Improvements.....	3
MonitorPro Web	3
MonitorPro Desktop	8
Bug Fixes	11
MonitorPro Web	11
MonitorPro Desktop	11
MonitorPro Field.....	11
MonitorPro Service	12

Improvements

MonitorPro Web

Calendar

- Comments and Hyperlinks are now available to Add / View respectively within the Scheduled Task Calendar View.

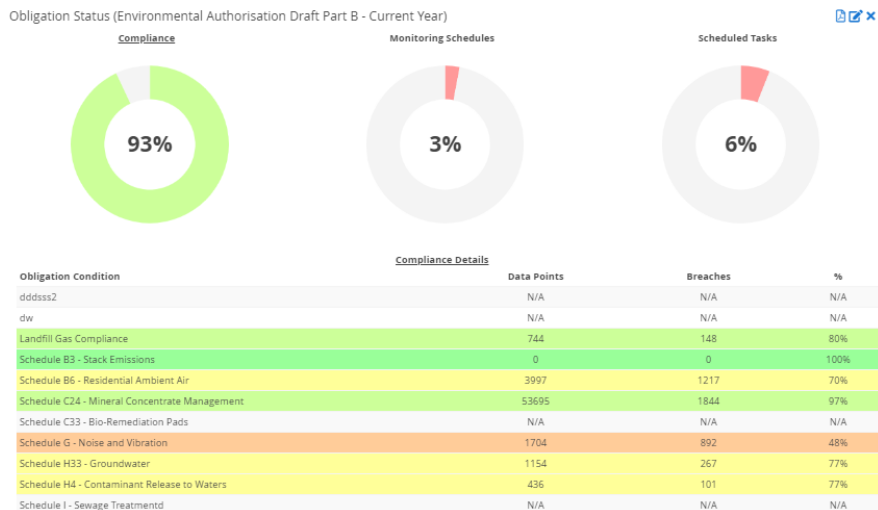
Event Details ✕

Scheduled Task

Name Air Quality Reports
Date Friday, 07 June 2019
Task run 07/06/2019 00:00:00
Assigned User michael
Due date 07/06/2019 00:00:00
Complete
Completed on
Comment
HyperLink
Status Task ran and sent email with attachment
Status detail Task ran successfully and sent email with attachment to: michael.white@ehsdata.com;

Dashboard

- Obligation Status Widget is available to be added to Dashboards.



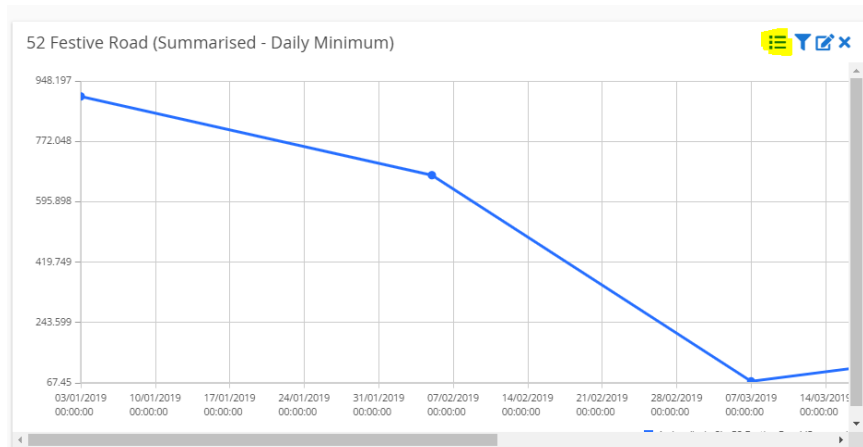
Dataset

- Multi-Site Sample Point Groups are now supported within the Dataset Editor.

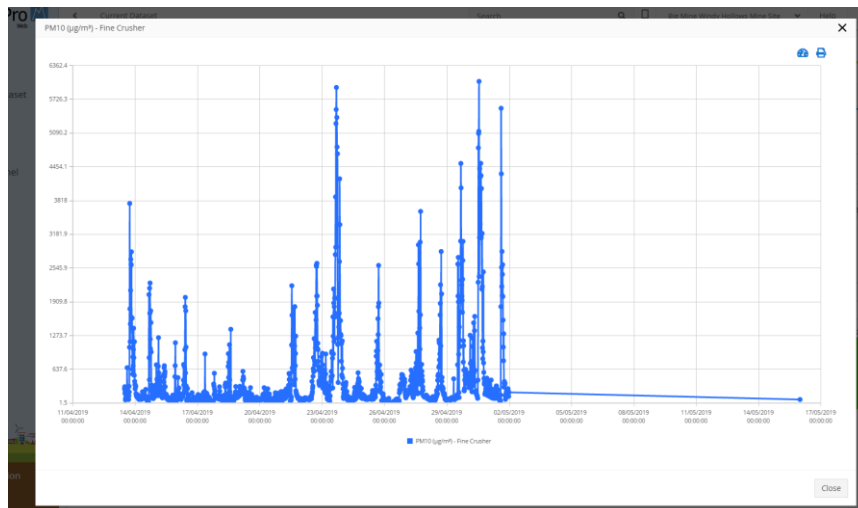


Graphing

- Line Graphs are able to be summarised in Graphing directly and within a Graphing widget added to a Dashboard.



- Pie and Bar Chart data can now be viewed in a more detailed Line Graph.



- Line Graph data can now be viewed in a more detailed Table format.

Location	Sample Point	Variable	Data Source	Date	Value	Sample Refere...	Lab Reference	Sample Type	Comments
Dust Gauges	52 Festive Road	As (mg/kg/m2)	Contract Lab	08/05/2019 00:00:00	317			No Sample Type	
Dust Gauges	52 Festive Road	As (mg/kg/m2)	Contract Lab	07/03/2019 00:00:00	71			No Sample Type	
Dust Gauges	52 Festive Road	As (mg/kg/m2)	Contract Lab	05/02/2019 00:00:00	673			No Sample Type	
Dust Gauges	52 Festive Road	As (mg/kg/m2)	Contract Lab	03/01/2019 00:00:00	903.045			No Sample Type	

Object Management

- Variables are now able to be assigned a dedicated Colour. Graphing will use the colour assigned when plotting the variable.

Edit Variable ✕

General
Values
Comment
Links

Long Name

Short Name

Units

Colour

Last updated

Altered By

CAS Number

Key Variable

Delete Archive Save Cancel

Obligations

- Obligation Grouping is now implemented.

Obligations Add new Obligation									
Company Obligations									
Name	Ref Number	Type	Reg Body	Issue date	Review date	HyperLink	Report	Calendar	Edit
BigMine Corp. Strategic Sustainability Targets	BMCSU5001	Corporate Standard	Corporate Management	01/09/2015	01/01/2016	BigMine Corp. Strategic Sustainability Targets			
Environmental Authorisation Draft Part B	MIN1027000112	Permit	EPA	01/01/2010	01/01/2016	Draft EA Permit - WindyHollows			
Environmental Authorisation Permit Part A	ukzi 2010-675	Permit	Environment Agency	01/01/2014	01/06/2015	EA Permit			
Legal Obligations									
Ungrouped									

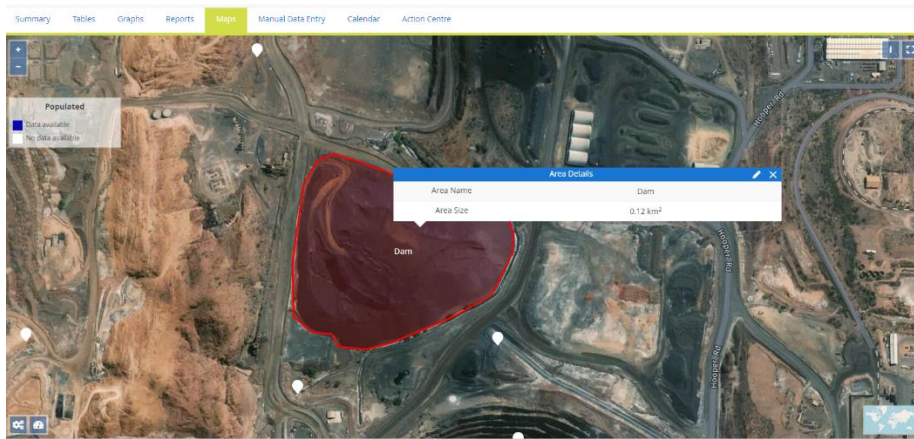
- Hyperlinks are now able to be added to Obligation Conditions.

Obligation Conditions: BigMine Corp. Strategic Sustainability Targets Add Condition

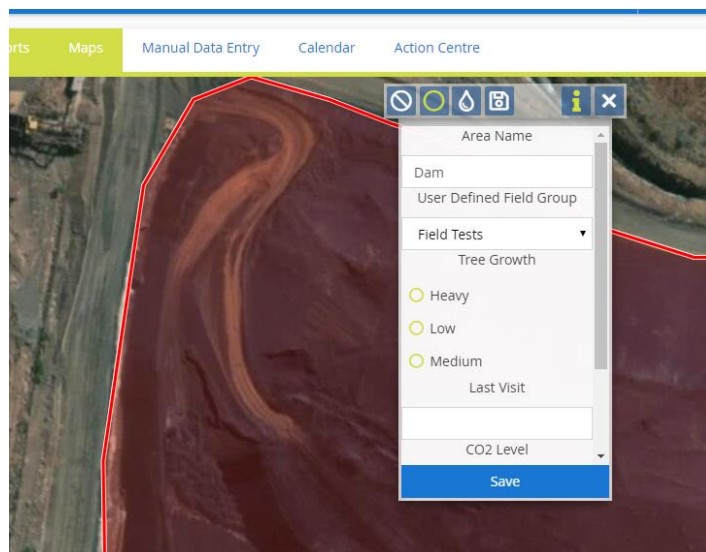
Obligation Condition	Comment	HyperLink	Dashboard	Analyse	
1. 25% total CO2 intensity reduction	From a 2005 baseline, a 25% reduction in total (direct and indirect) carbon dioxide equivalent intensity by 2025; 35% by 2030.		▲	▲	Edit
2. 15% Reduction in energy intensity of concentrate	From a 2005 baseline, a 15% reduction in the energy intensity of Global Primary Products by 2025; 25% by 2030.		▲		Edit
3. 30% freshwater intensity reduction	From a 2005 baseline, a 30% reduction in average freshwater-use intensity by 2020; 35% by 2030.		▲	▲	Edit
4. 50% landfill reduction	From a 2005 baseline, a 50% reduction in landfilled waste by 2020; 75% by 2030.		▲	▲	Edit
5. 30% Land rehabilitation	Rehabilitate 30% of total waste rock storage areas by 2020; 40% by 2030.	Concentrate storage facility(2016-02-24-22-47-00).jpg Concentrate Storage Facility(2017-04-14-06-01-40).jpg EA Permit	▲		Edit
sc new condition 3					Edit
sc new condition 4					Edit

Mapping

- Mapping Area Template functionality is now implemented. This allows the ability to draw highlighted areas directly on to the map and assign User Defined Fields to it.



- Mapping User Defined Fields are now added and are used in tangent with Mapping Area Templates.



User Defined Fields

- User Defined Field have been overhauled. Typed fields are now implements. In addition, User Defined Fields now can be Grouped.

Field Tests Edit		
Name	Type	Options
Soil Acidity	Number	
Tree Growth	Radio	Heavy Low Medium
Last Visit	Date	

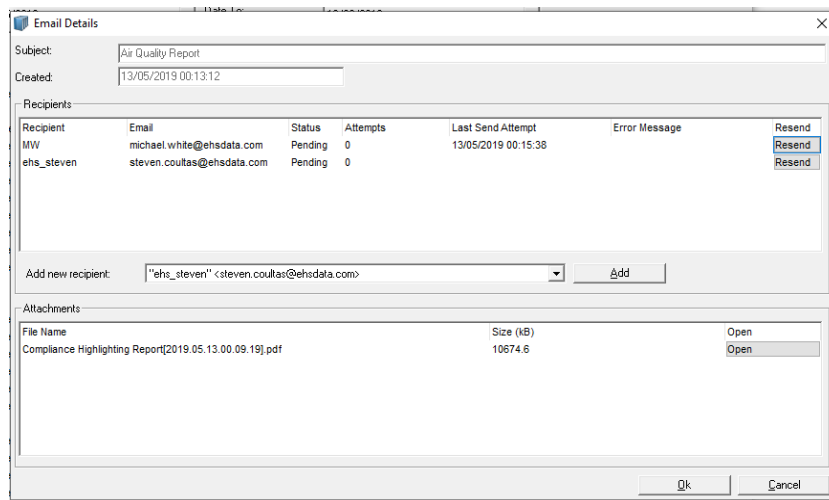
MonitorPro Desktop

Calendar

- Comments and Hyperlinks are now available to Add / View respectively within the Scheduled Task Calendar View.

Emails

- Email Log, which shows a log of outgoing emails and allows resending, is now implemented.



Factor Tables

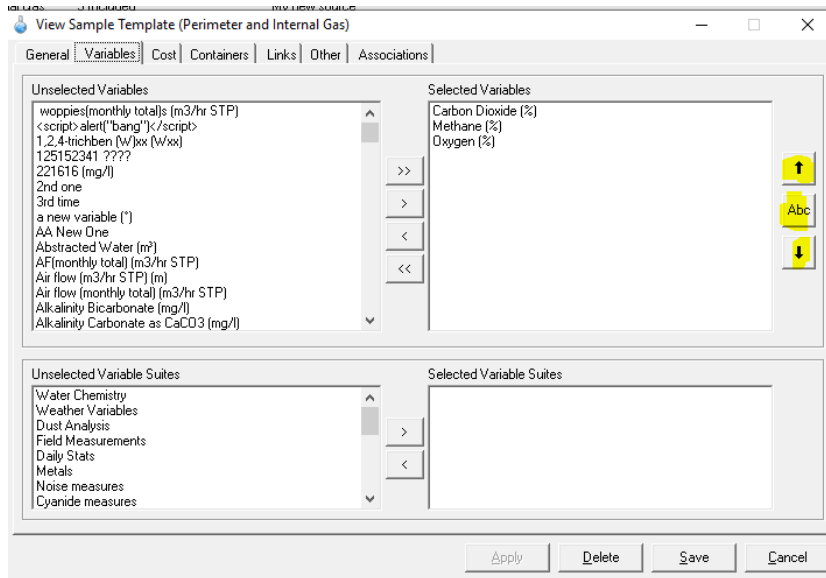
- Column and Row Heading are now frozen, meaning they will always be visible when scrolling.

The screenshot shows a table titled 'Factor Values for Datum' with a grid of data. The first column is 'Sample Point' and the first row contains dates: 10/1/1995, 13/06/2019, 13/06/2020, 13/09/2021, 13/06/2022, 13/06/2023, and 13/06/2024. The data rows list various monitoring points like 'Air Monitoring Locat: Boile...' and 'Groundwater BH: BMW-1' through 'Groundwater BH: DW-58'. The table has a scrollable area and buttons for 'Import Sheet', 'Export Sheet', 'Add Date', 'Remove Date', 'Save Grid', and 'Cancel' at the bottom.

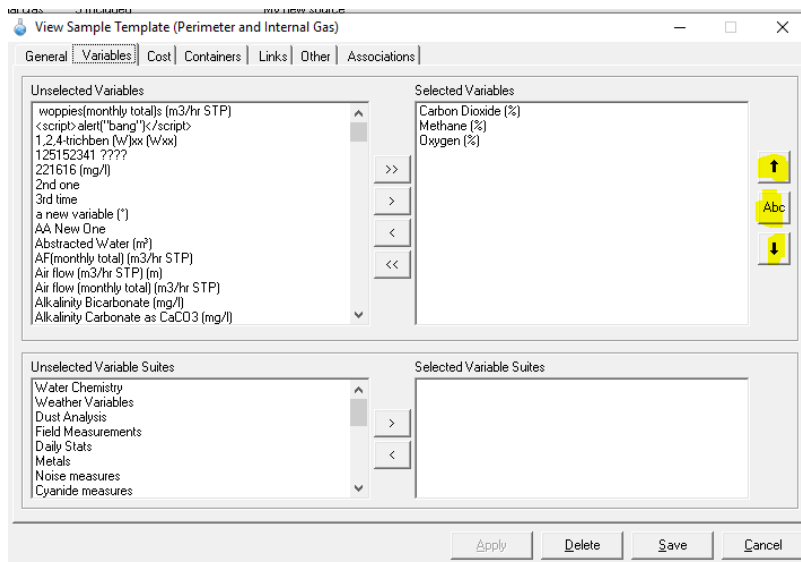
Sample Point	10/1/1995	13/06/2019	13/06/2020	13/09/2021	13/06/2022	13/06/2023	13/06/2024
Air Monitoring Locat: Boile...	5.67	5.67	5.67	5.67	5.67	5.67	5.67
Groundwater BH: BMW-1	0.01	5.01	5.01	5.01	5.01	5.01	5.01
Groundwater BH: BMW-3	4.4	4.4	4.4	4.4	4.4	4.4	4.4
Groundwater BH: DMW-1	4.48	4.48	4.48	4.48	4.48	4.48	4.48
Groundwater BH: DMW-2	7.1	7.1	7.1	7.1	7.1	7.1	7.1
Groundwater BH: DW-20R	7.4	7.4	7.4	7.4	7.4	7.4	7.4
Groundwater BH: DW-25	7.88	7.88	7.88	7.88	7.88	7.88	7.88
Groundwater BH: DW-27	4.68	4.68	4.68	4.68	4.68	4.68	4.68
Groundwater BH: DW-28	6.74	6.74	6.74	6.74	6.74	6.74	6.74
Groundwater BH: DW-31	7.94	7.94	7.94	7.94	7.94	7.94	7.94
Groundwater BH: DW-32	5.26	5.26	5.26	5.26	5.26	5.26	5.26
Groundwater BH: DW-34	5.6	5.6	5.6	5.6	5.6	5.6	5.6
Groundwater BH: DW-36R	0.48	10.48	10.48	10.48	10.48	10.48	10.48
Groundwater BH: DW-39	12.58	12.58	12.58	12.58	12.58	12.58	12.58
Groundwater BH: DW-40	12	12	12	12	12	12	12
Groundwater BH: DW-41	6.46	6.46	6.46	6.46	6.46	6.46	6.46
Groundwater BH: DW-42	7.8	7.8	7.8	7.8	7.8	7.8	7.8
Groundwater BH: DW-49							
Groundwater BH: DW-50R							
Groundwater BH: DW-51							
Groundwater BH: DW-52							
Groundwater BH: DW-53							
Groundwater BH: DW-54							
Groundwater BH: DW-55							
Groundwater BH: DW-56							
Groundwater BH: DW-57							
Groundwater BH: DW-58							

Sample Templates

- Variables can now be ordered within Sample Templates.

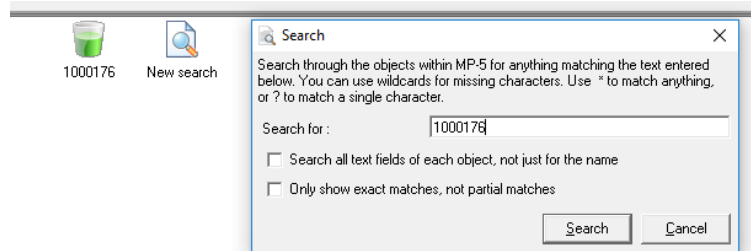


- Sample Templates can now be ordered within Monitoring Schedules



Search

- Lab Reference and Sample Reference are now part of the Search Functionality



Translation Grids

- Translation Grids now displaying within the calculation roots of within data point properties.

Bug Fixes

MonitorPro Web

- Resolved an issue in which selecting the 'All Dates' option within the Dataset editor caused the 'Today' option to be set.
- Fixed a bug that caused the Email Import Tooltip for Attachments to not Display the complete filenames of the attachments.
- Fixed an defect Regarding Axis Setting within Graphing not being Culture Aware
- Rectified an issue in which graphing titles were being trimmed incorrectly.
- Fixed a number of Issues that caused incorrect behaviour when Editing / Deleting users.
- Resolved a defect where database name override suggestion would not display
- Rectified an issue regarding how PDF imports are processed.
- Fixed a bug that caused partially committed files to be highlighted the incorrect colour within the Importer Log
- Rectified an error that occurred when multiple graphs were batch printed.

MonitorPro Desktop

- Rectified a defect which caused the application to momentarily freeze when accessing the news feed.
- Resolved an Issue which caused previous visits to disappear if other visits were created ahead of time.
- Fixed an issue which caused the TLS Checkbox within Email Account Settings to not save correctly.
- Repaired a defect that meant contacts could not be removed from Scheduled Tasks.
- Rectified an Issue relating to Email Alerts successfully sending to recipients if a date format mismatch occurred.
- Resolved a bug in which logging of Auto Import Comment and Record Comment defaults were incorrectly registered.
- Selection Based Calendar should no longer error and drilling down to a user specific Monitoring Schedule Calendar view.
- Fixed a defect that caused ad hoc visits not to display in certain circumstances.

MonitorPro Field

- Rectified an Issue that caused attempted logins to MP-Field would intermittently fail.
- Fixed a defect that resulted in Sources not within a Sample Template would sometimes display in MP-Field Source List.
- Database names will now display correctly.
- Resolved a bug that caused an inability to download a Visit if it contained a Variable that was part of multiple Sample Templates.
- Rectified a defect in which Sample Points that had no Sample Type Assigned would be automatically assigned 'Duplicate'.

MonitorPro Service

- Rectified an Issue that caused files to be imported twice in rare occurrences.
- Resolved a bug that caused the Email Processor to rename files.
- Fixed a Defect that cause the service to stop connection attempts in certain circumstances.
- An error that occurred if the file path to a watched folder was too long has been corrected.
- Changes to how the Service incorrectly handled not finding files, have been implemented.

Version 15.0 has addressed 181 issues (both minor and major). There have been many areas of new functionality, improvements, and bug fixes. Major Improvements and Issues have been detailed in this document. Full details of all issues are available on request. All issues have been unit, peer and regression tested.