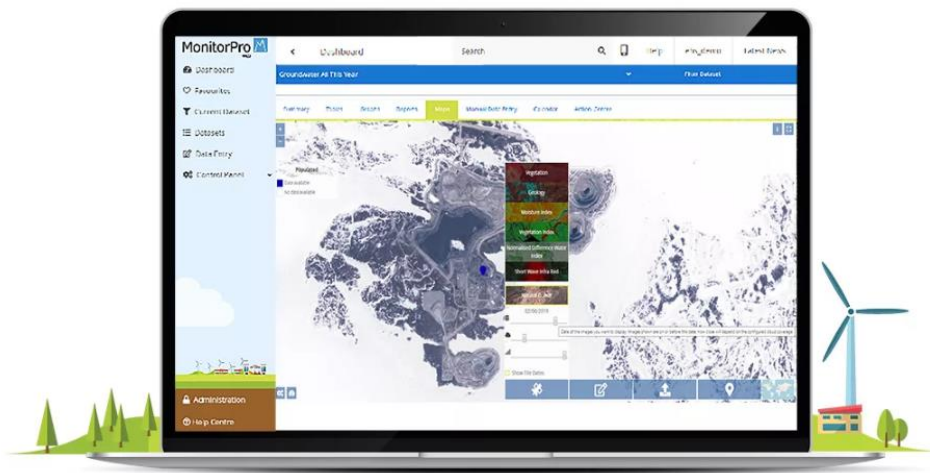


# MonitorPro



## MonitorPro Release Notes

V16.0



# Contents

Contents .....	2
Desktop.....	3
Translation Grids – Range Matching .....	3
Aggregates now support Mean plus n standard deviations .....	4
Calculations support Sample Type .....	5
Quick View - Mass Change of Status .....	6
Monitoring Schedules – pause with specified restart date .....	9
View Scheduled Task Reports .....	10
Sample Point Groups and Site Groups now support User Defined Fields .....	13
Web .....	14
Combo Charts .....	15
Bar Charts as a Time Series .....	16
Secondary Y Axis .....	17
Time Slider .....	17
Visit Status and Reports .....	18
Standard and Custom Exports.....	20
View Calc Root Data .....	21
Advanced Obligation Filtering .....	22
Sentinel Map Legends.....	23
Maps - Sample Point Association for Areas.....	24

# Desktop

## Translation Grids – Range Matching

Translation Grids now support translating ranges of values to text values or numeric values. For Example, in a Water Quality Index calculation the ranges calculated can be output to text. 0-10 = Poor, 10-20 = Fair, etc. The output could equally be a number such as 0-10 = 1, 10-20 = 2 to scale the values.

**Create New Translation Grid** [X]

Translation Grid Name:

Source Variable:

Source Filter: [All Data Sources]

Sample Type Filter: [All Sample Types]

Destination Variable:

Result Source: [Retain Data Source]

Result Sample Type: [Retain Sample Type]

**Numeric Matching Options**

Exact text matches only

Linear Interpolation - numeric input values that are between the source values will linearly interpolate a value between the matching output values (if also numeric)

Range matching - all numeric input values that are equal or less than each source value entered will be assigned the matching output value (text or number)

**Sample Points**

Filter:

- Air Monitoring: Boiler 1
- Air Monitoring: Boiler 3
- Air Monitoring: Dust 1
- Air Monitoring: Dust 10
- Air Monitoring: Fine Crusher
- Air Monitoring: Generator 46
- Air Monitoring: GT/SRHG
- Air Monitoring: Leeds Rd
- Air Monitoring: Liq Burner

[>>] [>] [

[Create Copy] [Open Grid] [Delete] [Save] [Cancel]

## Aggregates now support Mean plus n standard deviations

To avoid having to create two aggregates you can now create mean plus n standard deviations functions in one step.

**View Aggregate (Alu +3 Standard Deviations)**

Overview | **Aggregate** | Sample Points | Summary Period | Comments | Links

Variable : Aluminum (mg/l) ...

Data Source : [All Sources] ...

Sample Type : [No Sample Type]

Function : Mean Plus n Standard Deviations

Number of SDs : 3

Result Variable : Aluminum Mean +3 StD (mg/l) ...

Result Data Source : Calculated ...

Result Sample Type : [No Sample Type]

Save History : Never

Date Set : End Date

Recalculate | Create Copy | Apply | Delete | Ok | Cancel

## Calculations support Sample Type

Aggregates, Generic, Specific and Translation Grids now support Sample Type. Sample Types can now be selected specifically in calculations to complete different functions against or used to filter out data such as QA/QC. A Sample Type can also be defined on output.

**New Generic Calculation**

Overview | **Calculation** | Rules | Sample Points | Comments | Link

Variable: [Dropdown]

Calculation:

Abstracted Water (m<sup>3</sup>)  
 Air flow (m<sup>3</sup>/hr STP)  
 Alkalinity Bicarbonate (mg/l)  
 Alkalinity Carbonate as CaCO<sub>3</sub> (mg/l)  
 Alkalinity Hydroxide as CaCO<sub>3</sub> (mg/l)  
 Alkalinity Total (mg/l)  
 Aluminum (mg/l)  
 Aluminum 95 th Percentile (mg/l)  
 Aluminum Mean +3 StD (mg/l)  
 Aluminum Monthly Avg (mg/l)  
 Ammonia (mg/l)  
 Ammonia as N (mg/l)  
 Ammonia as N (mg/lg)  
 Antimony (mg/l)  
 Arsenic (mg/kg/m<sup>2</sup>)  
 Arsenic (mg/l)  
 Balance (%)  
 Barium (mg/l)  
 Barometric pressure (mb)  
 Battery Voltage Daily Avg (°C)  
 Battery Voltage Daily Max (°C)  
 Battery Voltage Daily Min (°C)

Check Syntax  
Clear

Prefix result with less than symbol if detected during the calculation?

Detection Limit: [Text Box]

Result Variable: [Dropdown] ...

Result Data Source: [Dropdown] ...

Result Sample Type: [No Sample Type]

Recalculate | Create Copy | Apply | Save | Cancel

**New Generic Calculation**

Overview | **Calculation** | Rules | Sample Points | Comments | Link

Settings for managing existing or missing readings

Select a row then edit the details on the right

Variable	Apply Rule	Data Source	Sample Type
Alkalinity Hydroxide as CaCO <sub>3</sub> (mg/l)	If no match found, skip calculation	[Any Source]	[Any Sample Type]

Choose Rule for: Alkalinity Hydroxide as CaCO<sub>3</sub> (mg/l)  
 If no match found, skip calculation

Choose Data Source  
 [Any Source]

Choose Sample Type  
 [Any Sample Type]

What readings should this calculation filter on

Filter: Always

Recalculate | Create Copy | Apply | Save | Cancel

## Quick View - Mass Change of Status

Quick Views now support mass Delete/Restore/Approve of rows rather than having to change their status individually.

Variable	Unit	Data Source	Sample pt	Start Date	End Date	No. Records	No. Numeric	Mean	Minimum	Maximum	Range	Limit(s) breached	Exceedances Found	Edited
Cyanide ...	mg/l	Contract Lab	Groundwater Boreholes: BMW-1	24/01/1999	02/02/2020	62	62	0.02	0.00	0.89	0.89			Yes
Cyanide ...	mg/l	Contract Lab	Groundwater Boreholes: BMW-3	08/05/1999	02/02/2020	58	58	0.01	0.00	0.02	0.02			No
Cyanide ...	mg/l	Contract Lab	Groundwater Boreholes: DMW-1	12/11/1998	03/02/2020	75	75	0.01	0.00	0.01	0.01			No
Cyanide ...	mg/l	Contract Lab	Groundwater Boreholes: DMW-2	22/07/1999	19/02/2020	63	63	0.01	0.00	0.01	0.01			No
Cyanide ...	mg/l	Contract Lab	Groundwater		28/02/2020	48	48	0.01	0.00	0.10	0.10			No
Cyanide ...	mg/l	Contract Lab	Groundwater		11/02/2020	51	51	0.01	0.00	0.01	0.01			No
Cyanide ...	mg/l	Contract Lab	Groundwater		12/02/2020	6	6	0.01	0.01	0.01	0.00			No
Cyanide ...	mg/l	Contract Lab	Groundwater		05/02/2020	10	10	0.01	0.01	0.01	0.00			No
Cyanide ...	mg/l	Contract Lab	Groundwater		09/02/2020	66	66	0.01	0.00	0.01	0.01			No
Cyanide ...	mg/l	Contract Lab	Groundwater		27/02/2020	58	58	0.01	0.00	0.01	0.01			No
Cyanide ...	mg/l	Contract Lab	Groundwater		22/02/2020	64	64	0.01	0.00	0.01	0.01			No
Cyanide ...	mg/l	Contract Lab	Groundwater		03/02/2020	46	46	0.01	0.00	0.01	0.01			No
Cyanide ...	mg/l	Contract Lab	Groundwater		08/02/2020	61	61	0.01	0.00	0.01	0.01			No
Cyanide ...	mg/l	Contract Lab	Groundwater		08/02/2020	61	61	0.01	0.00	0.01	0.01			No
Cyanide ...	mg/l	Contract Lab	Groundwater		08/02/2020	59	59	0.01	0.00	0.01	0.01			No
Cyanide ...	mg/l	Contract Lab	Groundwater		25/02/2020	34	34	0.01	0.00	0.01	0.01			No
Cyanide ...	mg/l	Contract Lab	Groundwater Boreholes: DW-43	19/01/2017	17/02/2020	6	6	0.01	0.01	0.01	0.00			No
Cyanide ...	mg/l	Contract Lab	Groundwater Boreholes: DW-44	13/02/2012	02/02/2020	8	8	0.01	0.01	0.01	0.00			No
Cyanide ...	mg/l	Contract Lab	Groundwater Boreholes: DW-46	30/10/2013	20/02/2020	16	16	0.01	0.00	0.01	0.01			No
Cyanide ...	mg/l	Contract Lab	Groundwater Boreholes: DW-47	17/07/2013	20/02/2020	15	15	0.01	0.00	0.01	0.01			No

## Import Log and Status List filters

Both the Import Log and Status Lists can now be filtered to make it easier to find the files you are interested in. You can filter by date range but also the importer in which the file was imported or the status of the file/data.

Please enter the date range you wish to view import logs for:

Date From:  Date To:

Origin:  Status:

For further information select an import log from the list below and click 'View Import Details' (if available).

## Hierarchical Monitoring Schedules

Hierarchical Monitoring Schedules are now supported.

This means that, for example, a weekly, a monthly and an annual monitoring schedule can be associated with each other, and visit records for the most frequent visit will incorporate items from less-frequent visits.

**View Monitoring Schedule [Schedule H4 SW Field Sampling]**

General | **Schedule** | Alerts | Locations | Sample Points | Variables | QA/QC | Grid | Responsibilities | Sample Types | Status | Links | Associations

**Frequency**

- Daily
- Weekdays
- Weekly
- Monthly
- Three Monthly
- Yearly
- Custom - repeat every:

**Initial Date Offset**  
The ability to start your visits on a particular reoccurring date or day of the week

- Unchanged
- Start each visit on a fixed day:
- Start each visit on the:

Starting from:

Next Visit Records Planned for:

Previous Visit Records date:

Samples to be taken within:   from starting date

Analysis period:   from sampling date

**Hierarchical Monitoring Schedules**  
Choose an associated more frequent monitoring schedule to merge visits with :

## Monitoring Schedules date offset

Monitoring Schedules now support offsetting the initial date. For example, a Weekly visit could now always be scheduled on a Thursday, a Monthly on a particular date each month. It's now also possible to set dates such as the 'Second Monday' to be selected by the user.

The screenshot shows a software window titled "View Monitoring Schedule [Schedule H4 SW Field Sampling]". The window has several tabs: General, Schedule, Alerts, Locations, Sample Points, Variables, QA/QC, Grid, Responsibilities, Sample Types, Status, Links, and Associations. The "Schedule" tab is active.

**Frequency**

- Daily
- Weekdays
- Weekly
- Monthly
- Three Monthly
- Yearly
- Custom - repeat every:

**Initial Date Offset**

The ability to start your visits on a particular reoccurring date or day of the week

- Unchanged
- Start each visit on a fixed day:
- Start each visit on the:

**Starting from**:

**Next Visit Records Planned for**:

**Previous Visit Records date**:

**Samples to be taken within**:   from starting date

**Analysis period**:   from sampling date

**Hierarchical Monitoring Schedules**

Choose an associated more frequent monitoring schedule to merge visits with:

Buttons at the bottom:



## Monitoring Schedules – pause with specified restart date

Monitoring schedules can now be paused, but with the ability to automatically restart on a particular date. There is also an option to email a contact when the schedule restarts, allowing them to determine whether the restart date needs to be delayed further. This is useful for periodic or seasonal monitoring events.

**View Monitoring Schedule [Schedule H4 SW Sampling Plan]**

General | Schedule | Alerts | Locations | Sample Points | Variables | QA/QC | Grid | Responsibilities | Sample Types | Status | Links | Associations

Name: Schedule H4 SW Sampling Plan

Comment:

Autocomplete: 100 % of expected data

**Status**

- Make this Monitoring Schedule inactive - no more Visit Records will be created or updated until this is changed again
  - Automatically reactivate this monitoring schedule on the following date: Monday 20 Apr 2020
  - Additionally send a special reminder email when reactivated: "EHS\_Matt" <matt.silk@ehsdata.com>

Management

- Allow a manager to plan which people and/or dates that each sample should be taken on for visits for this schedule
  - Default each location's initial assigned date based on the date of the previous visit for that location, rather than the planned date of the new visit

Sample References

- This Monitoring Schedule requires sample references
- Automatically generate sample references

Lab Export Settings

- Fast track these samples
- Samples for this Monitoring Schedule should be marked as hazardous

Sample Matrix:

Project Number:

View Visits | Create Copy | Apply | Delete | Save | Cancel

## View Scheduled Task Reports

When viewing a calendar in either MP-Web or MP-Desktop, it is now possible to directly download the report relating to a scheduled task.

In Desktop, this is done by clicking the View button against the Email field, which displays details for the email including the attachments.

**View Task Record (Monthly groundwater report 29/03/2020)** ✕

General | Comments | Links

Schedule Name : Monthly groundwater report View

Assigned To : matt

Due Date : 29/03/2020

Task has been completed

Completed Date : 20/04/2020 00:00:00

Date Run : 29/03/2020

Email : Grounwater Report View

Status : Task ran and sent email with attachment

Status Detail : Task ran successfully and sent email with attachment to: matt.silk@ehsdata.com;

Last Update : 07/04/2020 18:04:49

Altered By :

Apply Ok Cancel

**Email Details** [Close]

Subject:

Created:

Recipients

Recipient	Email	Status	Attempts	Last Send Attempt	Error Message	Resend
MW	michael.white@ehsdata.com	Success	0	18/11/2019 21:07:27		Resend

Add new recipient:

Attachments

File Name	Size (kB)	Open
Compliance Highlighting Report[2019.11.18.14.23.56].pdf	22102.2	Open

[Ok] [Cancel]

The same information is also available in MP-Web

Event Details - Scheduled Task - Friday, 23rd August 2019 [Close]

Name: Air Quality Reports

Task run: 23/08/2019 00:00:00

Assigned User:

Due date: 23/08/2019 00:00:00

Complete:

Completed on: 23/08/2019 00:00:00

Comment:

HyperLink:

**Email**: **Air Quality Report**

Status: Completed

Status detail: Task ran successfully and sent email with attachment to: michael.white@ehsdata.com;

[Save] [Close]

Email Details



Subject Air Quality Report

Creation Date 18/11/2019 14:34:45

Recipients

Recipient	Email	Status	Attempts	Last Attempt	Error Message	
MW	michael.white@ehsdata.com	Success	0	18/11/2019 14:35:44		<a href="#">Resend</a>

Not selected

[Add](#)

Attachments

File Name	Size (KB)	
Compliance Highlighting Report[2019.11.18.14.23.56].pdf	22102.2	<a href="#">Open</a>

[Close](#)

## Sample Point Groups and Site Groups now support User Defined Fields

If User Defined Fields have been setup via Tools → System Options, then the Other tab for Sample Point Group Properties and Site Group Properties now display text-based fields for users to input values into.

## Web

New charting types are available - Combo Chart and Wind Rose Chart.



Line Graph



Bar Chart



Combo Chart



Pie Chart

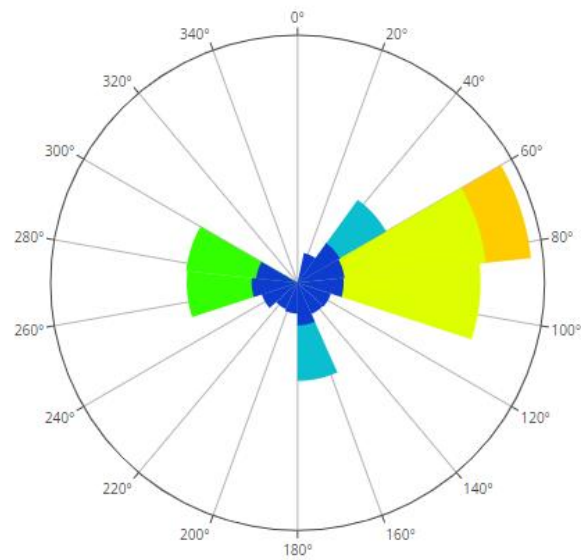


Wind Rose Chart

## Wind Rose Chart

It is now possible to generate Wind Rose Charts from within MP-Web

Main Site Weather Station - Wind Speed Daily Avg (mph)



## Combo Charts

It is now possible to combine a bar chart with a line chart.

Line Graph | Bar Chart | **Combo Chart** | Pie Chart | Wind Rose Chart

---

Bar Chart Sample Point  
Main Site Weather St

---

Bar Chart Variable  
Rainfall Daily Avg (cm)

---

Summary Type  
Average

Line Chart Sample Point  
Main Site Weather St

---

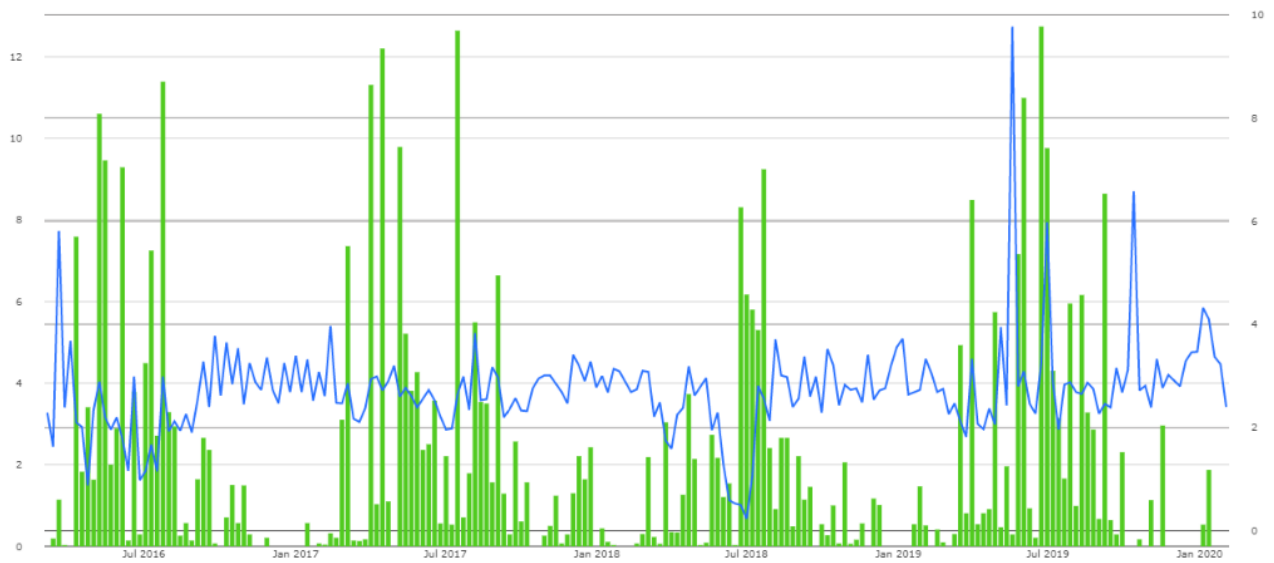
Line Chart Variable  
Temp Daily Avg (°C)

---

Time Series  
Day

Draw Graph(s)

Main Site Weather Station - Rainfall Daily (mm), Wind Spd Daily Avg (mph)



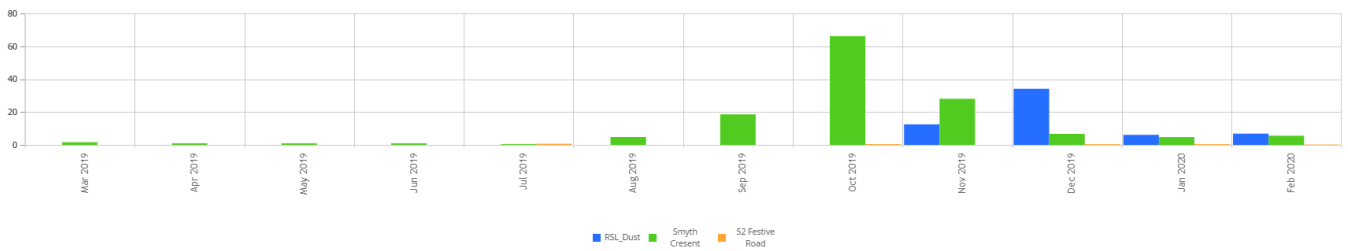
# Bar Charts as a Time Series

When creating a bar chart, it can now be created as a time series.

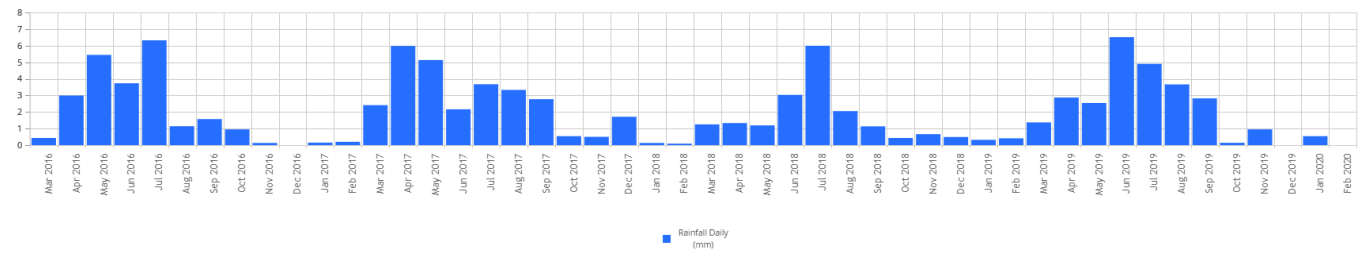
## Bar Chart

- Bar Chart
- Time Series Sample Point Bar Chart
- Time Series Variable Bar Chart

Average - Dust Concentration( $\mu\text{g}/\text{m}^3$ ) per Month (All Dates)



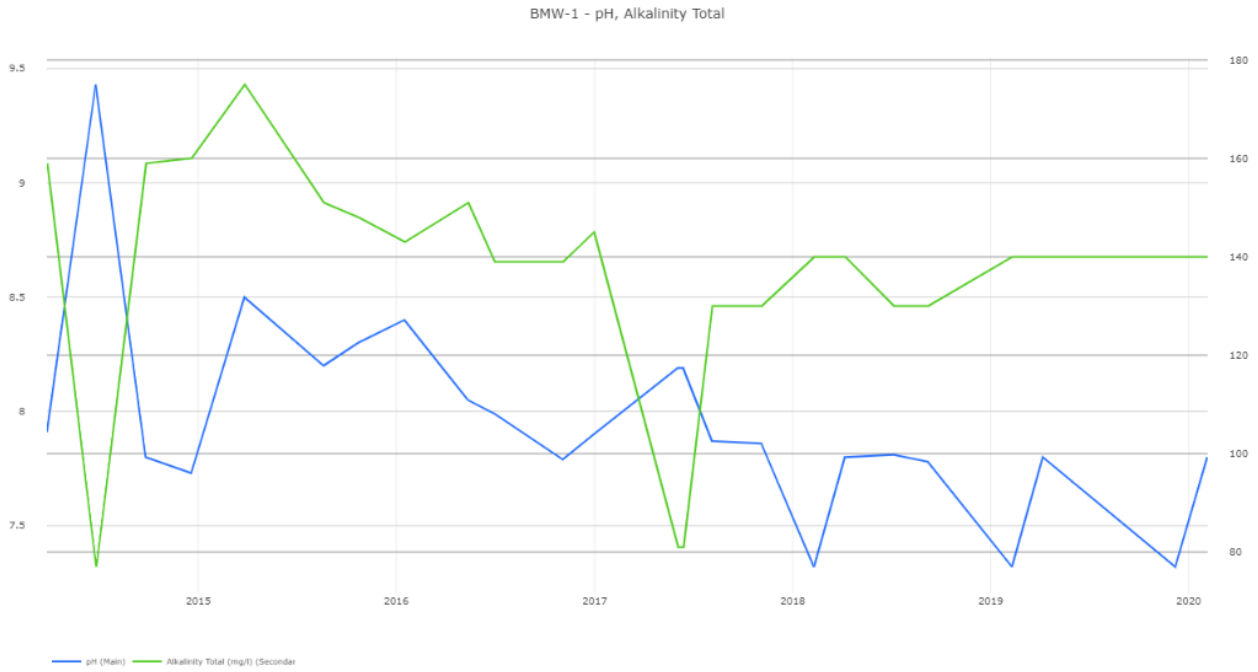
Average - Main Site Weather Station per Month (All Dates)





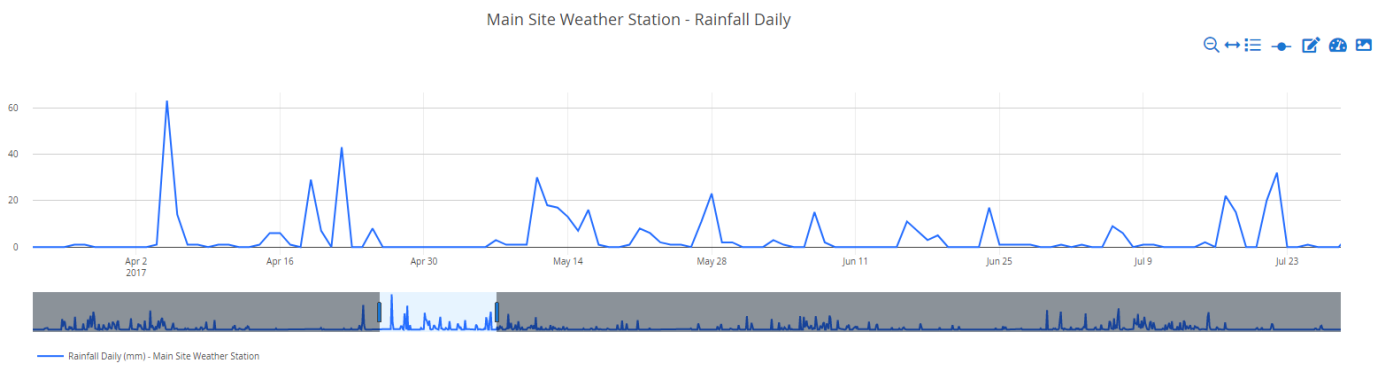
## Secondary Y Axis

It is now possible to have a secondary Y axis on a graph.



## Time Slider

An option is now available to display a time slider, to aid in selection of a range to zoom into with a line graph.



## Visit Status and Reports

Access to Visit Record information for Monitoring Schedules is now available via the Control Panel

Control Panel
▲

- Action Plans
- Calendar
- Compliance
- Importers
- Monitoring Schedules
- Obligations
- Policies
- Object Management

The overall status of each visit is viewable, and it is possible to generate reports for more detail on each visit

### Visit Records

Date Range:  →

Monitoring Schedule:  Source:

Name	Planned date	Actual date	Lab received date	Date complete	Status	Percentage complete	
Daily Schedule	23/04/2019	-	-	-	Results Overdue	0.0%	Report
Daily Schedule	24/04/2019	-	-	-	Results Overdue	0.0%	Report
Schedule H4 SW Sampling Plan	24/04/2019	-	-	-	Partial	75.0%	Report
Daily Schedule	25/04/2019	-	-	-	Results Overdue	0.0%	Report
Daily Schedule	26/04/2019	-	-	-	Results Overdue	0.0%	Report
Daily Schedule	27/04/2019	-	-	-	Results Overdue	0.0%	Report
Daily Schedule	28/04/2019	-	-	-	Results Overdue	0.0%	Report
Daily Schedule	29/04/2019	-	-	-	Results Overdue	0.0%	Report
Daily Schedule	30/04/2019	-	-	-	Results Overdue	0.0%	Report
Daily Schedule	01/05/2019	-	-	-	Results Overdue	0.0%	Report
Schedule B3 - SO2 Daily	01/05/2019	-	-	-	Results Overdue	0.0%	Report
Schedule B6 - Residential Dust Gauge Sampling Plan	01/05/2019	-	-	-	Results Overdue	0.0%	Report
Daily Schedule	02/05/2019	-	-	-	Results Overdue	0.0%	Report
Schedule B3 - SO2 Daily	02/05/2019	-	-	-	Results Overdue	0.0%	Report
Daily Schedule	03/05/2019	-	-	-	Results Overdue	0.0%	Report
Schedule B3 - SO2 Daily	03/05/2019	-	-	-	Results Overdue	0.0%	Report
Daily Schedule	04/05/2019	-	-	-	Results Overdue	0.0%	Report
Schedule B3 - SO2 Daily	04/05/2019	-	-	04/10/2019	Complete	0.0%	Report
Daily Schedule	05/05/2019	-	-	-	Results Overdue	0.0%	Report

1 of 38 Items per page 50

Scheduled

Due / In progress

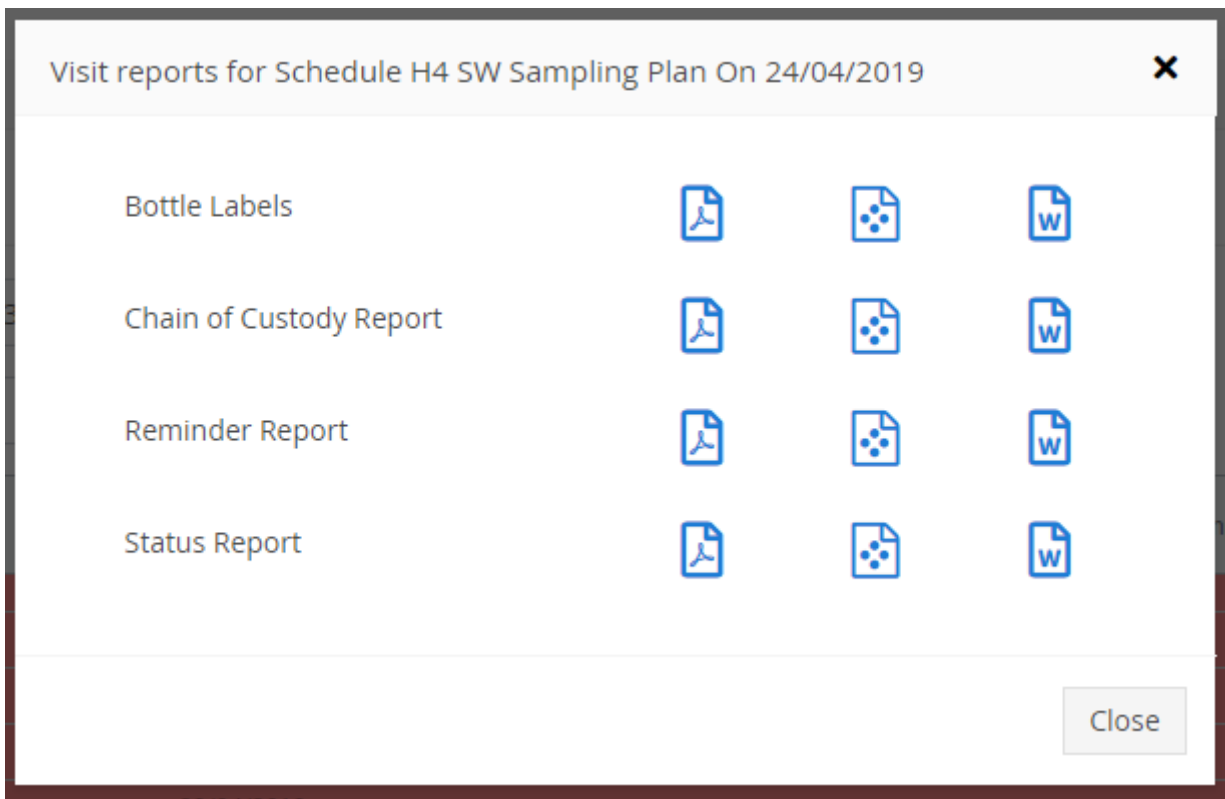
Overdue

Partial / Closed

Cancelled

Complete

Clicking Report shows the following dialog



## Standard and Custom Exports

Both standard and custom exports are now available to be downloaded via MP-Web, mirroring existing functionality in MP-Desktop

The screenshot displays the MP-Web interface. At the top, a blue navigation bar contains 'Weather Data' with a dropdown arrow, 'Filter Dataset', and 'Add Dataset to Favourites'. Below this is a secondary navigation bar with tabs for 'Summary', 'Tables', 'Exports' (highlighted in green), 'Graphs', 'Reports', 'Maps', 'Manual Data Entry', 'Calendar', and 'Action Centre'. The main content area is titled 'Standard Exports' and lists five export options, each with a 'CSV' icon and some with an 'X' icon:

Export Name	CSV Icon	X Icon
Export Data - Compliance	Yes	No
Export Data - Exceptions	Yes	No
Export Data - Extended Information	Yes	Yes
Export Data - Grid	Yes	Yes
Export Data - Grid Aggregated Data source	Yes	Yes

## View Calc Root Data

When viewing a data point in MP-Web, via Current Dataset, Tables tab, List view, a user can edit a point. It is now possible to see how calculated data was determined, matching Desktop functionality.

Edit Data ✕

[General](#) **Calculations** [Links](#) [Other](#)

Root data points

Location	Sample Point	Variable	Date	Value	Data source	File	Edit
No Rows To Show							

Used to calculate the following data

Location	Sample Point	Variable	Date	Value	Data source	Calculation	Edit
Windy Hollows Site Totals	Windy Hollows Site KPIs	CO2 (t)	01/02/2016 00:00:00	414.34	Calculated	Calc_KPI_CO2_Total_Site	<a href="#">Edit</a>

[Delete](#) [Update](#) [Close](#)

## Advanced Obligation Filtering

The ability to filter both Obligations and Obligation Conditions has been added, including saving created filters, having numerous rules for the filter, and filtering that supports ranges, dropdowns, numbers and other value formats.

Obligations

Add new Obligation

Add Obligation Group

Edit Filter ▼ Name: Permits Delete filter

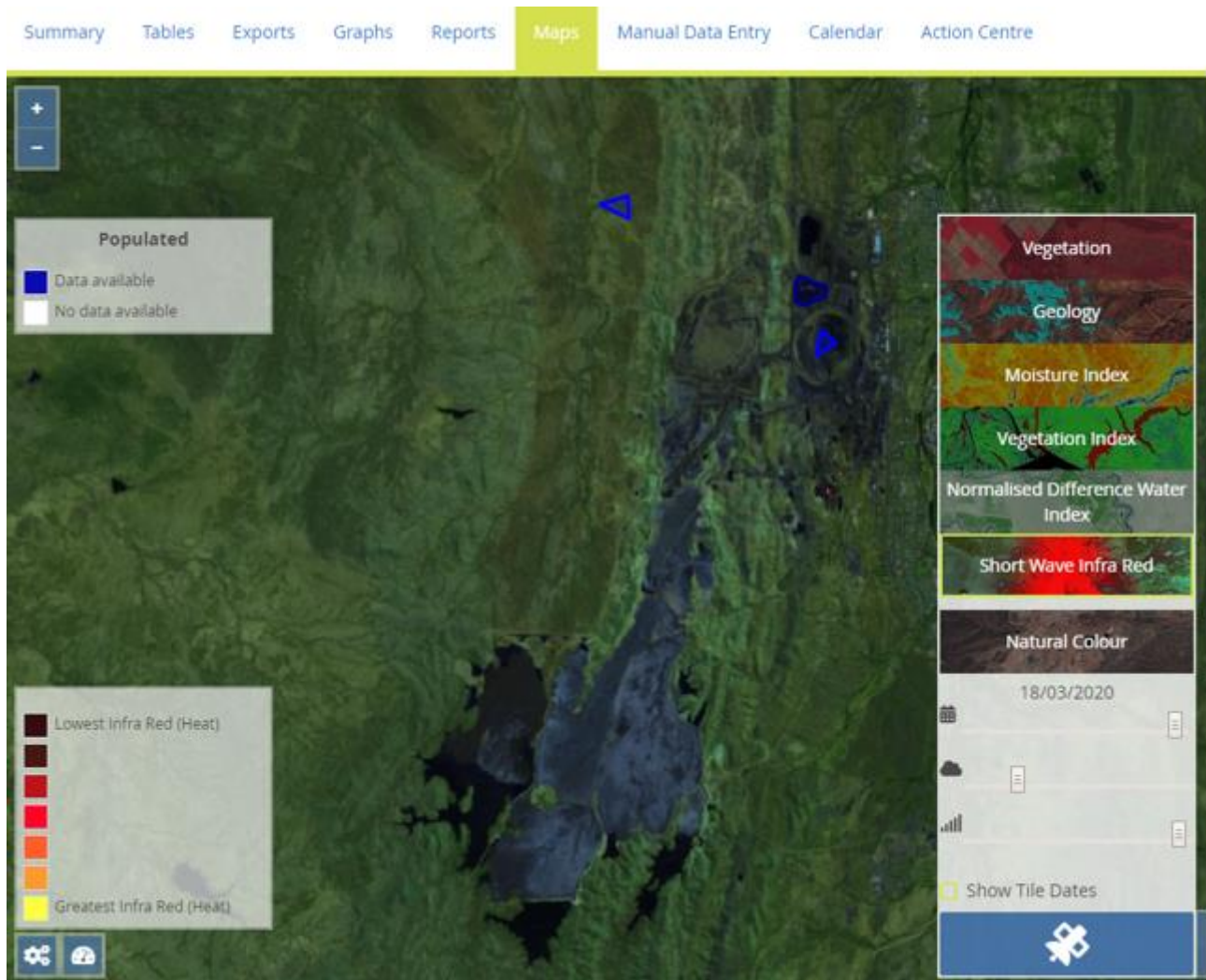
Obligation Type <span>▼</span>	equal to <span>▼</span>	Permit <span>▼</span>	Delete rule
Status <span>▼</span>	equal to <span>▼</span>	<input checked="" type="radio"/> Approved <input type="radio"/> Awaiting Approval	Delete rule
<span>Add rule</span>			

Apply Filter Update Filter Cancel

- 24 Items Found -

## Sentinel Map Legends

Legends have been added to Sentinel map data to explain what the colours mean.



## Maps - Sample Point Association for Areas

It is now possible to associate a Sample Point with an area, by first choosing a Location followed by a Sample Point. These are restricted by those available within the current selection.

