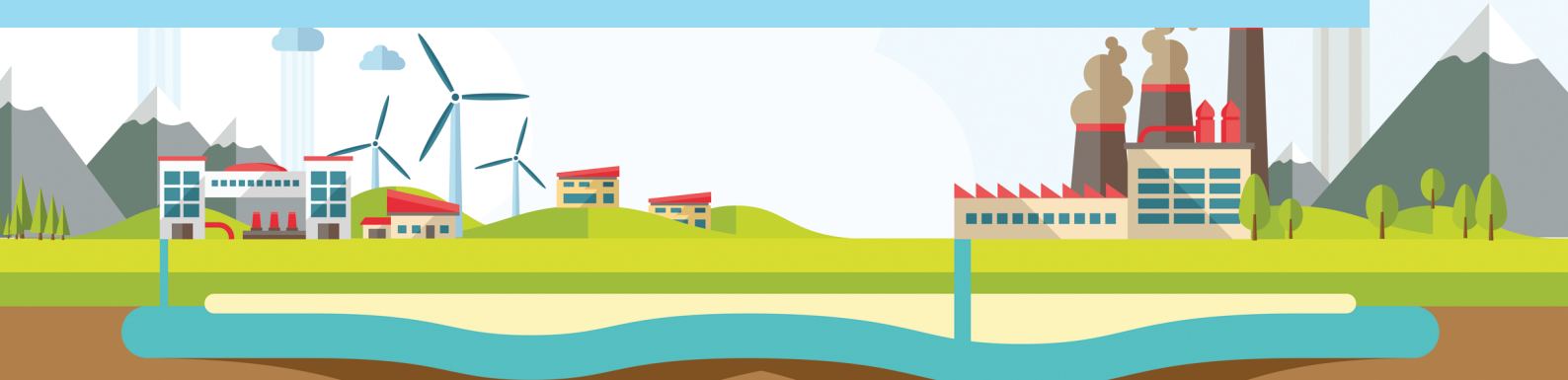


Glencore's Townsville operations use MonitorPro to improve management of their environmental monitoring data



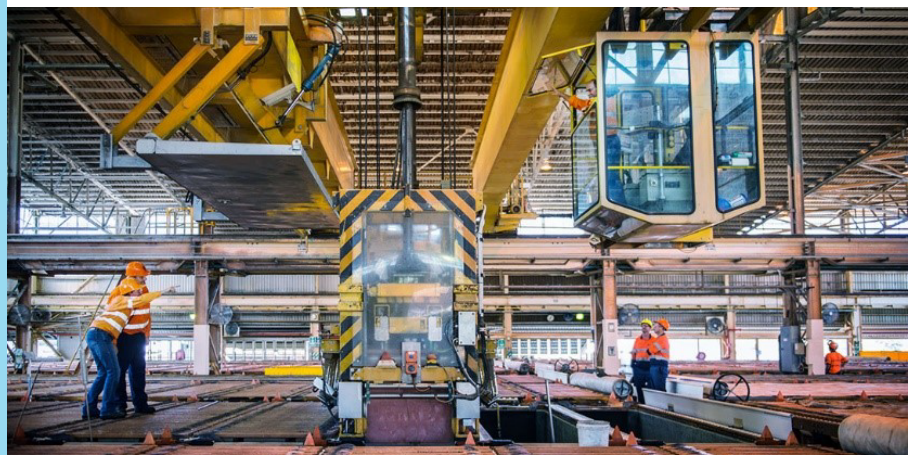
## MonitorPro

Environmental  
Data Management  
Software.

Solutions for Corporate  
Social Responsibility,  
Sustainability,  
& Energy.

*Glencore's Townsville Operation implement innovative, automated reporting systems to increase efficiency in compliance monitoring.*

Founded in the 1970s, Glencore has grown to become a major producer and marketer of commodities - employing 146,000 people around the world. In Townsville, Queensland, Australia Glencore operates both Copper Refineries Ltd and their Port Operations. The environmental team manage compliance across both locations, through extensive monitoring networks and data analysis.



A professional environmental and sustainability information management solution, particularly suited for industries related to natural resources. **MonitorPro** is globally tested and used extensively in metals and mining, smart energy industries, waste & water management, local government and utility organisations.

Case Study Publication - January 2019





## The Business Challenge

The environmental team are responsible for assessing compliance across the Copper Refinery and the Port Operations. The team decided that an automated management system with powerful flexibility and high

frequency reporting was key to monitoring their environmental compliance. The team utilise the MonitorPro functions such as compliance highlighting, scheduling and automated reports to reduce the administrative burden of environmental reporting.

**“MonitorPro is exactly what we needed; an environmental data management and reporting system that is highly capable.”**

*Senior Environmental Advisor*

## Solution

MonitorPro was implemented into the environment department in 2005. Since then, the team has become increasingly skilled in the use of MonitorPro and its functions. They have utilised the technology available to develop their own high frequency reporting dashboards and designed extra automation into their system.

The environmental monitoring process continues to improve and grow and in 2018, the team upgraded to the latest version of MonitorPro.



*Representation of the MonitorPro EHS System*

## Business Benefits

### Automation

With MonitorPro, reporting is automated as far as possible, improving accuracy and reducing the burden on the team, so they can spend their time managing any environmental impact instead of reporting on it.

### Transparent data analysis

Data from disparate sources and different locations can be compared and analysed, all in one place.

### Maximising data visibility

Especially important when working across multiple sites.

### Preserves data history

Glencore's Townsville operations has a significant historical dataset, and MonitorPro has enabled this data to be kept securely and with integrity, regardless of system and staff changes. The audit trail of data ensures confidence of its accuracy, many years after collection.

## Conclusion

By using MonitorPro, Glencore now manage their data efficiently, effectively and appropriately. EHS Data continues to work closely with the Glencore environmental team to ensure they receive benefits from the new software

updates. EHS Data also work closely with partner laboratories to further streamline the sample management process. For more information about MonitorPro, please contact the EHS Data team at [enquiries@ehsdata.com](mailto:enquiries@ehsdata.com).

