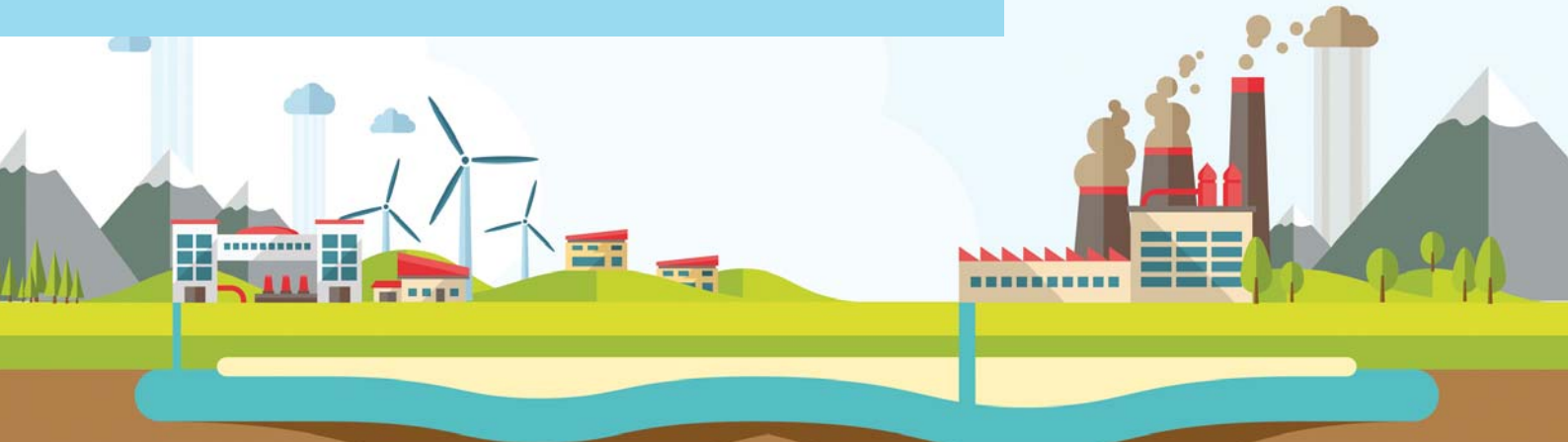


# Case Study

## Working with **Brett Group**



## MonitorPro

Environmental  
Data Management  
Software.

Solutions for  
Corporate  
Social Responsibility,  
Sustainability,  
and Energy.

*The Brett Group was established in the UK in 1909. Since that time Brett has evolved into a successful, established construction and building materials group - one of the largest independents in the UK.*

The business is structured into a number of divisions each being aligned with a product set - aggregates, concrete, construction, granite products, marine aggregates, landscaping, building products, landfill and waste.



A professional environmental and sustainability information management solution, particularly suited for industries related to natural resources. **MonitorPro** is globally tested and used in water and waste water industries, as well as waste management, metals and mining.



## The Overview

Having used **MonitorPro** for seven years to manage their landfill monitoring data, the Brett Group have worked with EHS Data on a database to manage their CSR data. The system closely mimics their business structure which of course ties into the locations at which data arises and allows them to consider data at site level, business unit level, regionally and corporately.

In total the system manages sustainability data from over 80 sites across 9 businesses.

## The System



It makes full use of **MonitorPro's** flexibility, and handles these types of data:

- Community and Customer Relations
- Developing people
- Land Management and biodiversity
- Regulation
- Site energy and water usage
- Transport energy
- Waste

## The Implementation

Imported data is automatically calculated to produce useful KPI's, for example conversions from different energy sources to KWh and Kg carbon. These are also aggregated per site and calculated with production data to provide water, waste and energy use per tonne of product Data Entry is based on the standard Brett spreadsheet template.

The **MonitorPro** Monitoring Scheduler will alert site staff when their data is due for submittal, and also alerts if/when it has not been sent. Custom benchmarking reports have been provided that display the KPIs and other data.



First EHS data management software to achieve MCERTS accreditation.

enquiries @ehsdata.com  
0845 388 2458  
www.ehsdata.com

more available at [ehsdata.com/documents/uploads/Brett\\_CS.pdf](https://ehsdata.com/documents/uploads/Brett_CS.pdf)

