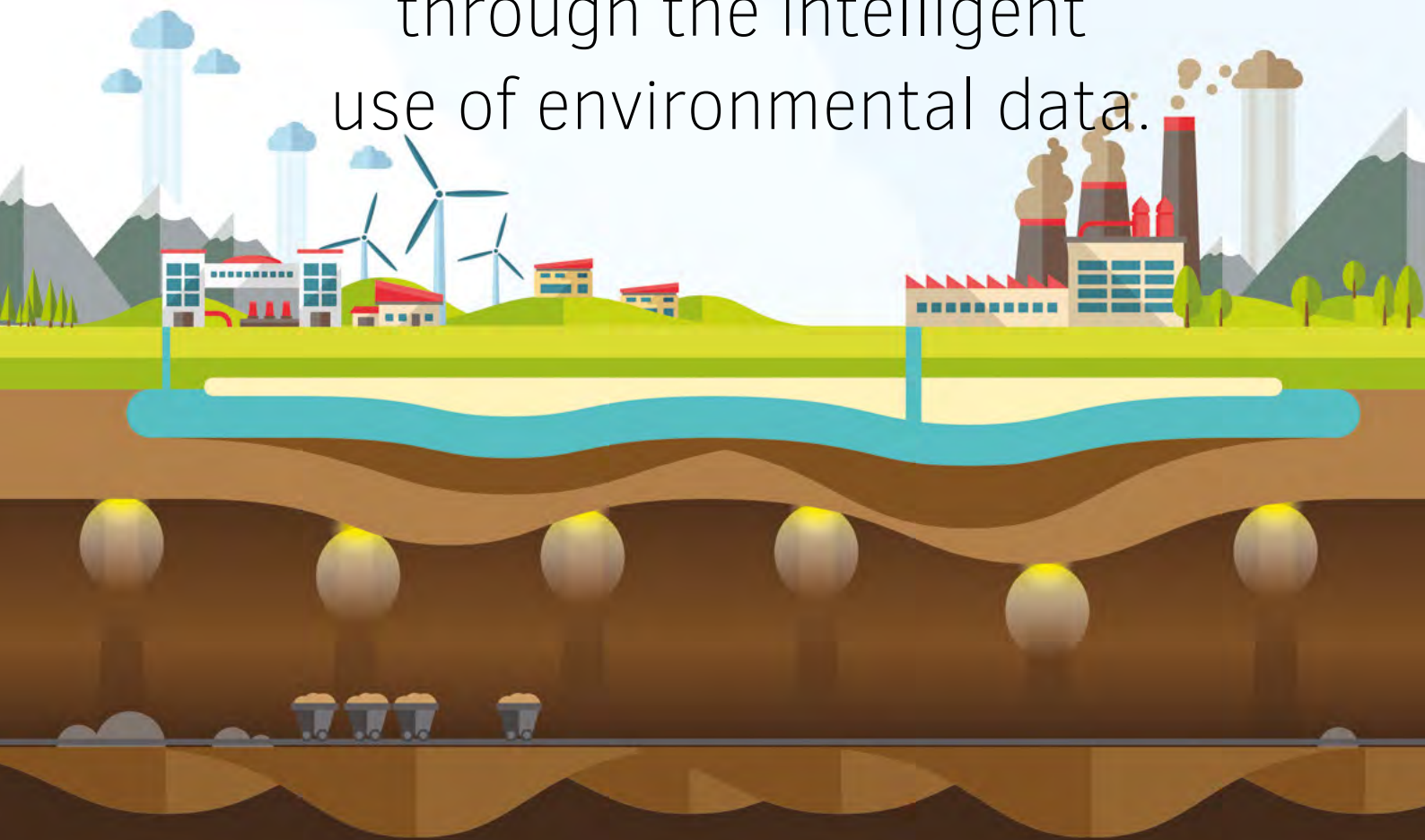




Helping to achieve a sustainable world  
through the intelligent  
use of environmental data.



EHS Data Ltd  
January 2021



# Introduction

**EHS Data** develop and implement a world leading environmental data management systems to save time, improve planning, quality, analysis, awareness and reporting.

## Our approach

**EHS Data** fully integrates software and configuration consultancy to offer a full service to create your system and keep it running smoothly.

## Working with you

A dedicated implementation consultant will work with you to deliver services which include database creation, legacy data transfers and custom report design, plus on-site or online training. We then offer a variety of ongoing support and data processing services tailored to suit. We pride ourselves in outstanding quality of support, which ranges from helpdesk to system upgrades, maintenance and administration, plus system hosting options.

## Environmental principles

**EHS Data** strongly believe that a major role of our solutions is to reduce the impact on the environment and to enhance sustainability. This passion is reflected in our internal ethos and we have been carbon neutral since 2018.



## Technical strength

The technical strength of our company is at the heart of our business. Our team have been recruited from not only in IT but also from environmental and technical backgrounds, and all have a long track record of using, administering and developing Environmental and Sustainability Data Management

Software. Our developers are experienced in the specific fields of EHS data management, from waste management to contaminated land, mining and general industrial site monitoring. This enables the company to develop highly relevant solutions and quickly understand our clients' needs.



**EHS Data** develop systems which are highly configurable by the end users, giving you complete control. If, however you need custom development all of our expertise is in-house, with our entire development team based in the UK. From development through project management to software support we have all of the expertise under one roof. We strongly believe in producing high quality systems, which is why our solutions are certified to the rigorous MCERTS quality standard by the English Environment Agency.



enquiries@ehsdata.com    www.ehsdata.com





With over 22 years' experience providing **EHS Data** management systems, MonitorPro products are used at a thousand sites in over 30 countries worldwide, from single site installations to large multi-site corporate applications. **EHS Data** has firmly established itself as a leader in its field. This is why many large corporations have chosen **EHS Data** as their data management solutions provider.

Seamlessly Import or  
Email Data Directly to  
MonitorPro from the Field.



Powerful Satellite Imagery  
Technologies inc. Google &  
Sentinel Mapping.

## Comprehensive features

Analyse, trend, manipulate and report across all data, confident it's secure, auditable and defensible to regulators and stakeholders. Never miss a breach or non-conformity, whether it be notification via email or scheduled report. All your data is validated and reviewed against a highly

flexible compliance system, whether it be permit, internal or statistically calculated limits. Planning and scheduling of reporting and data collection requirements with notifications and seamless integration with data collection.

# Environmental compliance

Our solutions are designed to enable users to professionally manage their diverse environmental compliance data in one solution.

## Working with us

Join a network of current users already benefitting from the power and flexibility of our solutions across a variety of industries and geographies. Assured you can remain compliant with your internal and external obligations.

## Expertise

With extensive experience and expertise, we'll likely have already provided a solution in your country or industry. Whether it be a large complex industrial process in Australia, a contaminated

land site in the UK, a mine site in the USA or elsewhere in the world, our solutions are flexible and intuitive enough to suit them all.

## One solution for environmental compliance

- ▶ Obligations and policy tracking.
- ▶ Integration & seamless input of a range of data.
- ▶ Scheduling and task tracking.
- ▶ Integrated field data capture.
- ▶ Flexible compliance validation.
- ▶ Automated calculation & conversion of data.
- ▶ Comprehensive suite of interpretation tools.
- ▶ Customisable compliance and performance reporting.



Several of our former employees have already stated that they miss using MonitorPro, as they realise how much easier it made their life. They wish their new employer would make the investment.

EHS Data Client



enquiries@ehsdata.com    www.ehsdata.com



enquiries@ehsdata.com    www.ehsdata.com

## Obligations management

Managers can see at a glance compliance against obligations at a high level while administrators and technicians can review and manage compliance at a point by point level.



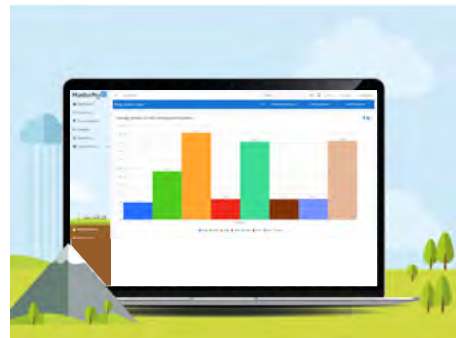
## Flexible solutions

Our solutions can look after the data from a large variety of sources. The solution is flexible enough to handle all types of monitoring data, calculations and reporting at a local, regional or organisational level.



## Bringing data together

With multiple data types, monitoring programmes, sources of data and reporting requirements, managing sustainability data can be onerous, especially when multiplied across many locations and geographies.



**“I’ve found that one of the best features is the compliance breach automated emails. There is something very reassuring in knowing that as soon as data makes it into MonitorPro (which can obviously be very rapid with auto importer) you will be notified of any issues without having to go through all the data looking for problems.**

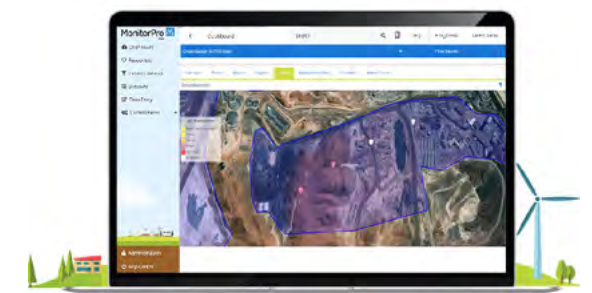
EHS Data Client

## The sustainable solution

- ▶ Highly flexible integration with many systems such as SAP and PI.
- ▶ Carbon footprint - Import and enter all energy data, e.g. diesel, oil, gas, electricity to automatically generate CO2 equivalent totals by location, aggregate them to report by site, region or organisation.
- ▶ Water and energy balances aid in targeting losses.
- ▶ Record waste arising by type, and track trends in volumes recycled or landfilled.
- ▶ Integrate with business data to automatically create KPIs for energy, waste or water use per person, department or site, or per tonne of production.
- ▶ Comprehensive reports assist with identification of trends and performance against targets.



User-configurable dashboards enable simple and effective data sharing and powerful displays.



Powerful mapping you don't need to be an expert to use. Create areas to display permit boundaries, restoration areas or borefields.

## Our systems are designed to manage energy data

- ▶ Manage all types of energy data, including electric, gas, transport fuel, gas oil, LPG, renewable energy and more.
- ▶ Automated calculations for carbon conversion factors.
- ▶ Create and review the organisation's carbon footprint.
- ▶ Set targets based on CRC, CCLA or continuous improvement (using historical data to auto-calculate reduction targets).
- ▶ Automatic importing of all half hourly (HH) and other frequency data, from sub meters, data loggers, historians and other sources.
- ▶ Review accurate costs based on tariff rates.
- ▶ Calculate usage during specific times of a day to discover out of hour's usage.
- ▶ Modifications of targets over time with integrity being retained.



enquiries@ehsdata.com [www.ehsdata.com](http://www.ehsdata.com)



[www.ehsdata.com](http://www.ehsdata.com)





## About EHS Data

**EHS Data** is a global company with headquarters in Nottinghamshire, UK. We provide environmental data management solutions to a variety of organisations in over 40 countries worldwide. Trusted in over 1,000 sites, **EHS Data's** software solution, MonitorPro, helps organisations manage their environmental obligations and sustainability whilst saving them time and money.

## Company history

**EHS Data** began in the mid-nineties as a team of Geo-environmental Consultants struggled to manage environmental data using spreadsheets and home-made software systems. Fuelled by the desire to simplify this process, the first software tool was developed in 1996 and MonitorPro was born. The company grew rapidly and MonitorPro quickly became the tool of choice in the UK Waste Management Industry. Since then we have been expanding our global reach and are trusted by over 100 organisations and implemented in 1000 sites. These range from single site operations to global organisations, in a number of industries throughout the world.

Today, **EHS Data** is a world leader in developing and implementing environmental data management systems to save time, improve planning, quality, analysis, awareness, and reporting.

“**EHS Data are always driving to deliver exceptional service and products to our clients, and it's a pleasure to be part of such a team, who all share a passion for innovative technology that benefits the environment.**

Matt Silk - EHS Data, General Manager

## Our values

### Sustainability

We take responsibility for our businesses' impact on the environment and make continual efforts to reduce our carbon footprint.

### Client support

Our clients are at the heart of everything we do and we are committed to offering exceptional client support at all times.

### Professional development

Our team of dedicated specialists work closely with you to guide you through the implementation process and beyond.

### Team spirit

We're a team of energetic, talented professionals who thrive in fast paced and innovative environments. We work hard to deliver total client satisfaction.

### Honesty & integrity

We believe in being entirely honest with everyone we deal with, whether a customer, an employee or a supplier.

### Environmental principles

Our continued effort to help the environment includes operating a paper-less office, web based training, online product demonstrations, and planting a tree whenever we fly.

## Why choose EHS Data?

①

### Technical Strength

Our team evolved from technical and environmental backgrounds with a variety of knowledge. This includes the application, the management, the creation and the growth of intelligent environmental data management tools.

②

### Flexibility

**EHS Data** develop environmental data management systems. These highly configurable solutions are tailored to meet a range of specific requirements of clients operations. Our entire development team is based in Notts, UK.

③

### Trust & Credibility

**EHS Data** have worked with different organisations from Mining to Local Authorities to Energy Providers, large & small. Our industry knowledge is vast, and our experience allows us to offer the best possible solution for our clients.



enquiries@ehsdata.com    www.ehsdata.com



enquiries@ehsdata.com    www.ehsdata.com

MonitorPro 

## Key Facts

**1000+**

Trusted users worldwide

**MCerts**

First monitoring software to  
receive this quality certification

**22 years**

Research & development

**Intelligent  
Innovation**

Secure compliance obligations  
with powerful reporting



[www.ehsdata.com](http://www.ehsdata.com)

## Helping our clients meet their environmental objectives

Over the years **EHS Data** have worked on many projects saving clients time, saving them money, simplifying their reporting and providing solutions to keep their data secure and defensible. Working alongside some of the biggest corporate enterprises in the global mining sector, energy

sector, waste management and local authorities, providing the best solution to manage their environmental accounting. MonitorPro is a comprehensive environmental accounting process, which is highly configurable with incredible flexibility and scalability.



*MonitorPro is trusted by organisations spanning five continents, with locations in:  
Australia, North America, Canada, South America, Europe, Asia and Africa.*

### EHS Data - Global headquarters

Fernwood Business Park,  
Halifax Court, Newark  
Notts, UK. NG24 3JP

t: **+44 845 388 2458**  
e: [enquiries@ehsdata.com](mailto:enquiries@ehsdata.com)  
w: [www.ehsdata.com](http://www.ehsdata.com)



EHS Data Ltd  
Registered no: (GB)873375201  
MCERTS Certificate no. MC090140/02

