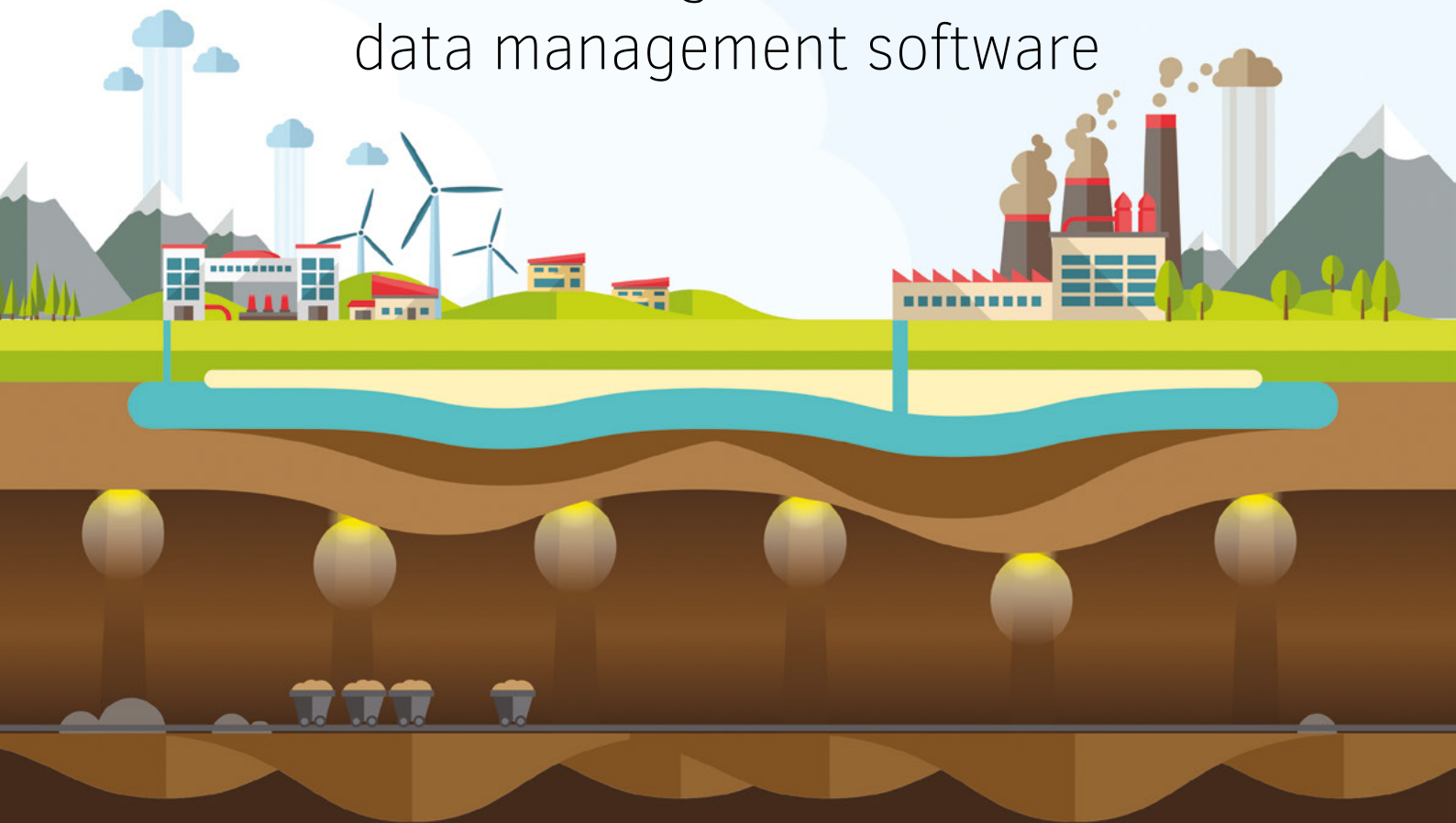




MonitorPro Desktop

World leading environmental
data management software



EHS Data Ltd
January 2021



MonitorPro Desktop

MonitorPro Desktop can be used as either the technical and administrative hub of a **MonitorPro** suite, standalone or in networked client/server mode. Some of the main features, but not all, are described below.

MonitorPro delivers a fantastic Return on Investment (ROI) through a series of key features including:



Compliance

MonitorPro gives peace of mind that you are fully compliant with environmental legislation. Configure early warning systems with suggested actions in case of permit breaches.



Quality

Quality control is first and foremost with **MonitorPro** as the system is the first Mcerts accredited complete environmental data management solution.



Time Saving

Save time and centralise your obligations, permits and policies, and link them to their related conditions and requirements.



Security

Secure login and named user accounts enables administrators the ability to tailor individual data access. Provide external stakeholders access to specific elements with roles defining abilities to change or edit data.



KPIs

Achieve your specific business goals whilst improving business performance with a range of customised KPIs.



Sharing

MonitorPro quickly allows users to share and interact with their environmental data. Users can view, trend, report and enter data via an intuitive and user friendly interface.





Integration

Enables data from many sources to be drawn together and managed coherently. Automatically pull or push data from other sources without risk of human errors in transcribing.



Scheduling

Whatever the frequency or complexity of monitoring, schedule your data collection, receive updates and check completeness.



Alerts

Never worry about missing a breached limit again. Set up custom alerts so you know when to take action, allowing you to be proactive about any issues you could face.



Reports

Plan, manage and report strategic data easily and effortlessly with **MonitorPro's** compelling and interactive graphical interface.



Graphs

Whether it be noise, weather, dust, groundwater or any other data, **MonitorPro** offers users simple ways to best present their data. Each option including line, bar, pie, combo and wind rose guide the user through creating output quickly



Maps

Powerful mapping and satellite imagery technology that you don't need to be an expert to use. Easily locate and view your sampling points. and easily.



Contour Maps

Examples of the external applications include Golden Software Surfer and Arc Map GIS. Using the built-in Surfer Control you can customise the plot, select plot types, and add base layers, which is then passed to Surfer to generate the counterplot.



MCerts Certified

MCerts accreditation is specifically for environmental data management systems. It covers quality procedures similar to ISO9000, coding standards and software systems such as testing, plus functionality and performance, including security and auditability etc.



Why choose MonitorPro?

MonitorPro is a complete and professional environmental data management solution that provides environmental professionals the latest innovative tools to successfully manage their environmental compliance and data collection.

The **MonitorPro** suite of products includes **MonitorPro Desktop**, **MonitorPro Web** and **MonitorPro Field** and is trusted by over 1,000 users in 40 different countries. **MonitorPro** is the first EHS Software solution to receive an MCERTS accreditation from the Environmental Agency.

Seamlessly Import or
Email Data Directly to
MonitorPro from the Field



Powerful Satellite Imagery
Technologies inc. Google &
Sentinel Mapping

Discover how MonitorPro enhances productivity



Case study
Gold mining



Case study
Waste management



Case study
Local government



enquiries@ehsdata.com

www.ehsdata.com

Why choose EHS Data?

①

Technical Strength

Our team evolved from technical and environmental backgrounds with a variety of knowledge. This includes the application, the management, the creation and the growth of intelligent environmental data management tools.

②

Flexibility

EHS Data develop environmental data management systems. These highly configurable solutions are tailored to meet a range of specific requirements of clients operations. Our entire development team is based in Nottinghamshire, United Kingdom.

③

Trust & Credibility

EHS Data have worked with different organisations from Mining to Local Authorities to Energy Providers, large & small. Our industry knowledge is vast, and our experience allows us to offer the best possible solution for our clients.

Helping our clients meet their environmental objectives

Over the years EHS Data has worked on many projects saving our clients time, money, and simplifying their reporting and providing solutions to keep their data secure and defensible. Working alongside some of the biggest corporate enterprises in the world to manage their environmental accounting, **MonitorPro** is a comprehensive environmental accounting process, which is highly configurable with incredible flexibility and scalability.

MonitorPro is trusted by organisations spanning five continents, with locations in: Australia, North America, Canada, South America, Europe, Asia and Africa.



EHS Data - Global headquarters

Fernwood Business Park,
Halifax Court, Newark
Notts, UK. NG24 3JP

t: **+44 845 388 2458**
e: enquiries@ehsdata.com
w: www.ehsdata.com



EHS Data Ltd
Registered no: (GB)873375201
MCERTS Certificate no. MC090140/02

