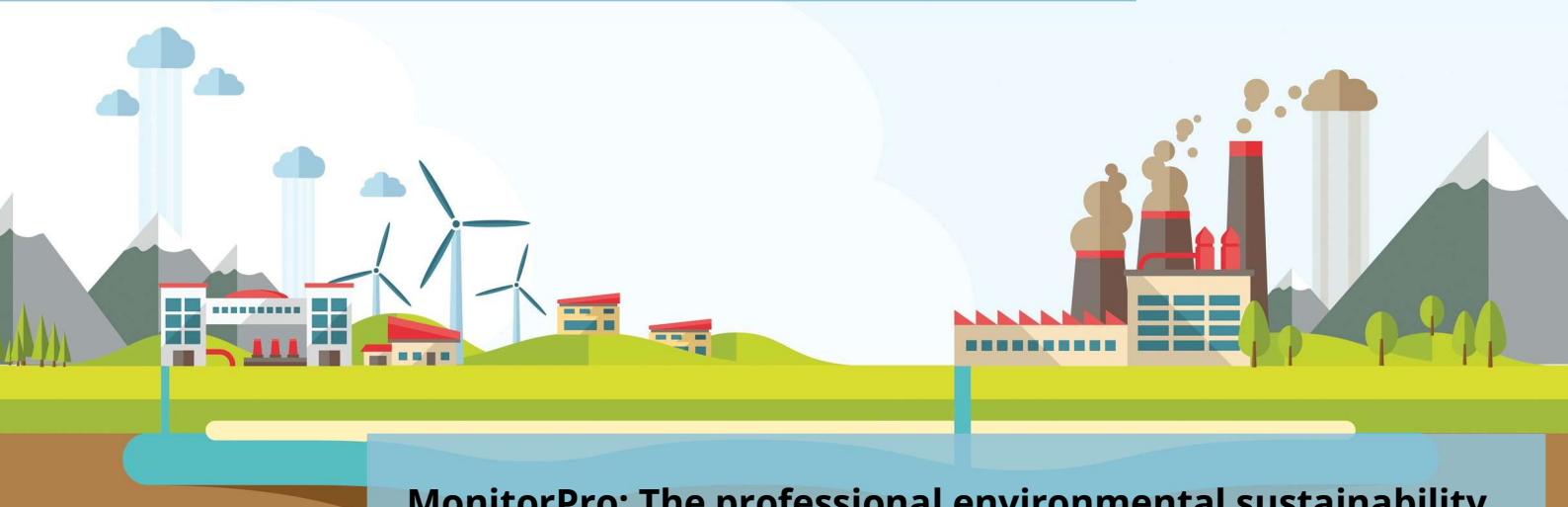


# MonitorPro Case Study: Sogama Waste Management Company



**MonitorPro: The professional environmental sustainability and management solution, trusted by thousands of users worldwide.**

**Sogama** is a public company responsible for the management and treatment of urban waste produced in the Spanish region of Galicia. Sogama focuses on the sustainable management of urban waste with a goal of improving the Galician environment through a three-fold strategy of reduce, reuse, and recycle, which complements the energy recovery from non-recyclable waste (<https://www.sogama.gal/gl>).



# Sogama Waste Management

Waste is processed at a number of different facilities including the Cerceda Environmental complex, a 65 hectare complex comprising of a series of different processing plants all with specific tasks including a thermoelectric plant which uses the non-recyclable waste to generate electricity with a capacity of 50 MW/h.

Other complex's include a composting plant processing 15,000 tons of organic matter a year, and with a network of 3 more plants currently planned, and a 47 hectare landfill with leachate and treatment plant.

All these facilities have numerous environmental controls and protection measures in place in relation to both emissions and water purification, which ensures compliance with strict regulations.



## Environmental Compliance Requirements

Having so many different facilities spread across several locations means vast amounts of data are collected and require analysing to ensure regulations are continually being met. Previously this was achieved using spreadsheets but it became clear that approach was not sustainable. To find a solution to this Sogama approached **EHS Data** about managing their environmental data with **MonitorPro**.

## MonitorPro Implementation

**MonitorPro's** highly configurable system provided the perfect solution for **Sogama**, ensuring it continually complies to strict environmental regulations:

- Combining all the data from the different sites/locations into one centralised system.
- Automated data imports, exports, and reports.
- Compliance alerts.
- Cost tracking.

