

Key Facts

200+

Clients worldwide.

3,000+

Users worldwide.

25

Years of experience.

MCerts

First monitoring software to receive this quality certification.

MonitorPro: The Smart Approach to Environmental Data Management

MonitorPro is a world-class database management system dedicated to streamline environmental monitoring and reporting. Developed by **EHS Data**, **MonitorPro** has been used in Latin America by major mining companies since 2007. During that time, continuous development using the latest technology, coupled with unparalleled customer support, has created an industry leading solution for environmental professionals.

One of the biggest challenges faced by responsible organisations is protecting the environment by reducing environmental impacts, meeting increased regulatory demands while saving on resources. Using the latest technology, **MonitorPro** delivers this plus a comprehensive view of environmental performance across all operations.

MonitorPro is trusted by organisations throughout the world with implementations in Australia, North America, South America, Europe, Asia and Africa.



Environmental Monitoring in Latin America

In mining, as in many other industries, a comprehensive environmental strategy is required to ensure that environmental permits are both obtained and maintained. There are various stages throughout a mine's lifespan which have different environmental impacts and resulting management approaches

Increasingly, Latin American mining companies recognise that careful and detailed management of their environmental impacts is crucial to ensure environmental compliance and avoid the potential fines and site closures which can accompany compliance breaches.

Mines and their associated processes in Latin America are well regulated to ensure the operations do not cause risk to the wider environment. These regulations require operators to conduct rigorous and continuous monitoring programs which results in complex monitoring schedules. The Monitoring Scheduler in **MonitorPro** is perfectly suited to this and simplifies both the setting up and completion of monitoring schedules.

MonitorPro has an extremely flexible reporting engine enabling **EHS Data** to develop specific reporting templates and custom exports to comply with different government requirements.

Permits

Permits are an essential requirement for a mining operation, these impose conditions which force an operation to manage its environmental impacts responsibly. There are various regulatory bodies around the world who grant permits. Once granted, various regulations including site monitoring/environmental data collection and report submission will be attached to the permit to ensure compliance is maintained.

Mine Stage

1. Exploration
2. Construction
3. Operation
4. Close Aftercare

Environmental Impacts

Vegetation clearance, impacts on cultural heritage, ground disturbance, water management (e.g. for drilling), spills and environmental accidents, loss and damage to topsoil required for eventual rehabilitation.

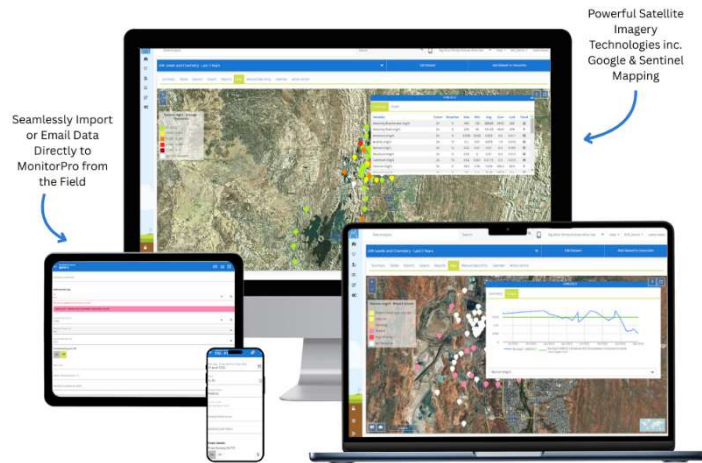
Land disturbance, ground and surface water impacts, dust, waste management, noise.

Impacts on air quality, noise, ground and surface water impacts, water use, waste rock management and resulting erosion, chemical use, environmental incidents (e.g. spills), waste management.

Seepage and toxic effects from waste rock and tailings; rehabilitation of the site.



MonitorPro: The Experts in Environmental Data Management Systems



Effortless Environmental Compliance with MonitorPro

- Automatic validation of data.
- Easy field data collection with **MP-Field**.
- Customisable dashboards.
- Highly configurable.
- Monitoring and Task Scheduler.
- Import Email data directly into **MonitorPro**.
- Powerful mapping and satellite imagery technology.
- Flexible and customisable reporting.
- Advanced graphing/calculation tools.
- Integration with external applications.
- Secure and Certified.



MonitorPro has been used by Natural Resource companies in Latin America since 2007.

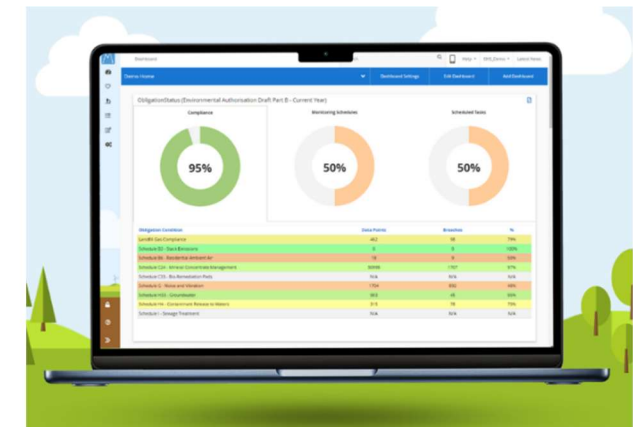
While working closely with our clients during this time the continuous development of **MonitorPro** has created an industry leading solution for environmental professionals. The **MonitorPro** community in Latin America has now grown to over 8 companies involved in the Natural Resources Industry and is actively used at more than 12 sites.

"Several of our former employees have stated that they really miss using MonitorPro as they now realise how it made their life easier. They wish that their new employee would make that investment."

Environmental Manager - MonitorPro Mining Client

MonitorPro is fully internationalised, allowing users to navigate the system in their language. This is ideal when **MonitorPro** is deployed on multiple sites or where sites and corporate offices need support in different languages.

- Language packs in **MonitorPro** are fully configurable, and users can update the default translations to ensure technical terms are clearly translated, allowing for regional or country differences.
- Each user's preferences will be saved in their own profile.
- Different date formats and settings are also supported.




Helping Latin American Clients Meet their Environmental Objectives

With trusted, flexible solutions developed around the demands of mining professionals in Latin America, our team will have the right solution for you. Over the years we've worked on many projects saving clients time, simplifying their reporting and providing solutions to keep their data secure.

Working alongside some of the biggest corporate enterprises in mining, providing the best solution to manage their environmental accounting, **MonitorPro** is a comprehensive environmental accounting process, which is highly configurable with incredible flexibility and scalability.



Latin American MonitorPro Locations

 Mine sites using **MonitorPro**

