

## Key Facts

200+

Clients worldwide.

3,000+

Users worldwide.

25

Years of experience.

MCerts

First monitoring software to receive this quality certification.

## MonitorPro: The Smart Approach to Environmental Data Management

**MonitorPro** is a world-class database management system dedicated to streamline environmental monitoring and reporting. Developed by **EHS Data**, **MonitorPro** has been used in the US by major mining companies since 2010. During that time, continuous development using the latest technology, coupled with unparalleled customer support, has created an industry leading solution for environmental professionals.

One of the biggest challenges faced by responsible organisations is protecting the environment by reducing environmental impacts, meeting increased regulatory demands while saving on resources. Using the latest technology, **MonitorPro** delivers this plus a comprehensive view of environmental performance across all operations.

**MonitorPro** is trusted by organisations throughout the world with implementations in Australia, North America, South America, Europe, Asia and Africa.



# Environmental Monitoring in the US

In mining, as in many other industries, a comprehensive environmental strategy is required to ensure that environmental permits are both obtained and maintained. There are various stages throughout a mine's lifespan which have different environmental impacts and resulting management approaches

Increasingly, US mining companies recognise that careful and detailed management of their environmental impacts is crucial to ensure environmental compliance and avoid the potential fines and site closures which can accompany compliance breaches.

Mines and their associated processes in the US are well regulated to ensure the operations do not cause risk to the wider environment. These regulations require operators to conduct rigorous and continuous monitoring programs. **MonitorPro** has an extremely flexible reporting engine enabling **EHS Data** to develop specific reporting templates, for example the Discharge Monitoring Report (DMR) used specifically for NPDES permits. Other states require self-monitoring report forms (SMRF) which are electronically generated by **MonitorPro**.

## Permits

Permits are an essential requirement for a mining operation, these impose conditions which force an operation to manage its environmental impacts responsibly. There are various regulatory bodies around the world who grant permits. Once granted, various regulations including site monitoring/environmental data collection and report submission will be attached to the permit to ensure compliance is maintained.

## Mine Stage

1. Exploration
2. Construction
3. Operation
4. Close Aftercare

## Environmental Impacts

Vegetation clearance, impacts on cultural heritage, ground disturbance, water management (e.g. for drilling), spills and environmental accidents, loss and damage to topsoil required for eventual rehabilitation.

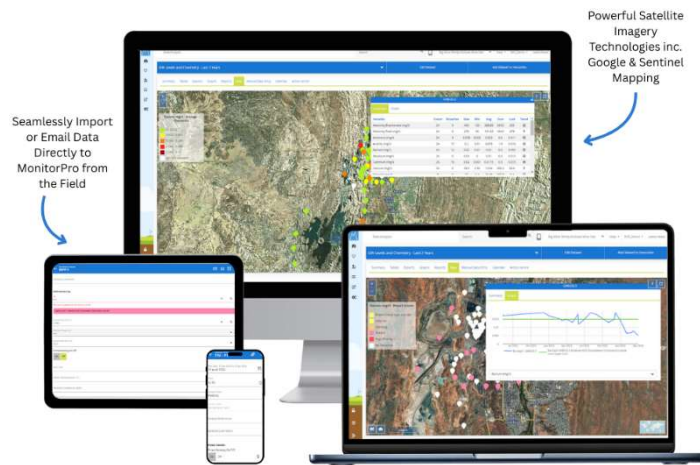
Land disturbance, ground and surface water impacts, dust, waste management, noise.

Impacts on air quality, noise, ground and surface water impacts, water use, waste rock management and resulting erosion, chemical use, environmental incidents (e.g. spills), waste management.

Seepage and toxic effects from waste rock and tailings; rehabilitation of the site.



# MonitorPro: The Experts in Environmental Data Management Systems



## Effortless Environmental Compliance with MonitorPro

- Automatic validation of data.
- Easy field data collection with **MP-Field**.
- Customisable dashboards.
- Highly configurable.
- Monitoring and Task Scheduler.
- Import Email data directly into **MonitorPro**.
- Powerful mapping and satellite imagery technology.
- Flexible and customisable reporting.
- Advanced graphing/calculation tools.
- Integration with external applications.
- Secure and Certified.



**MonitorPro** has been used by Natural Resource companies in the US since 2010.

While working closely with our clients during this time the continuous development of **MonitorPro** has created an industry leading solution for environmental professionals. The **MonitorPro** community in the US has now grown to over 15 companies involved in the Natural Resources Industry and is actively used at more than 20 sites.

*"MonitorPro is exactly what we needed; an environmental data management and reporting system that is highly capable."*

*Environmental Manager - MonitorPro Mining Client*

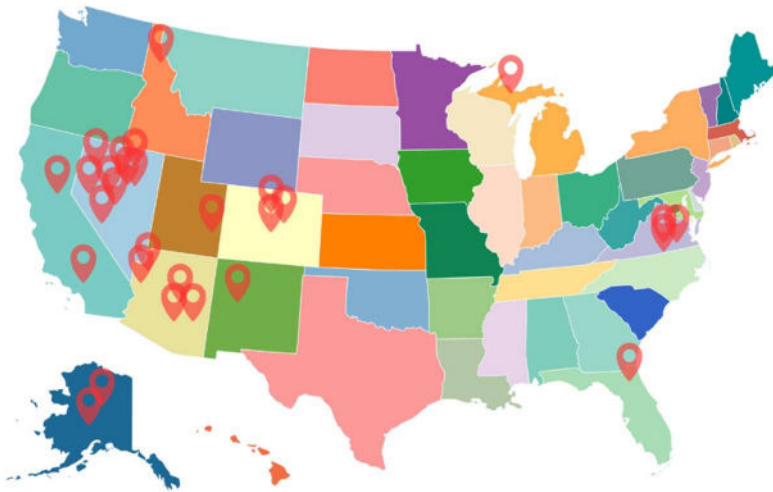
In the US, the Nevada Department of Environmental Protection (NDEP) has published Reference values for Dissolved Metals and Radiation that **MonitorPro** is well equipped to store and alert users on. The Quarterly Reporting Form as well as the BMRR (Bureau of Mining Regulation and Reclamation) Excel Upload are templates offered by **MonitorPro**.



# Helping US Clients Meet their Environmental Objectives

With trusted, flexible solutions developed around the demands of mining professionals in the US, our team will have the right solution for you. Over the years we've worked on many projects saving clients time, simplifying their reporting and providing solutions to keep their data secure.

Working alongside some of the biggest corporate enterprises in US mining, providing the best solution to manage their environmental accounting, **MonitorPro** is a comprehensive environmental accounting process, which is highly configurable with incredible flexibility and scalability.



## US MonitorPro Locations

 Mine sites using **MonitorPro**

