

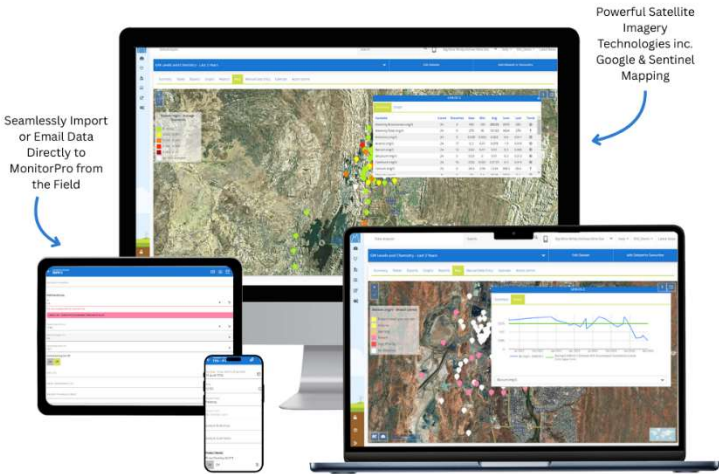


Environmental Data Management for Regional and Local Authorities

MonitorPro: Helping government, regional and local authorities to easily manage their environmental data.

The Perfect Tool to Easily and Effectively Manage Environmental Data

MonitorPro is a flexible and adaptable system assisting environmental professionals in managing data more efficiently. It has been used by several clients ranging from national government, to regional councils and local authorities.



MonitorPro enables clients to import, store, and manage large amounts of data, from legacy historical files to ongoing data collections, all within a centralised secure system. This allows for efficient data analysis and reporting which can easily be shared with other users, departments or authorities.

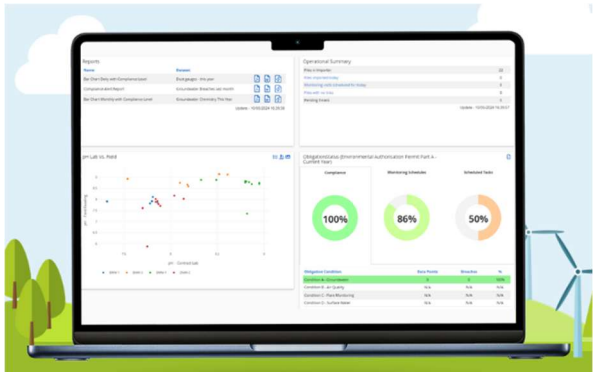
MonitorPro offers time savings through automation and more effective analysis of the data. This means regulators and government organisations can spend more time reviewing data for compliance and completeness than spending valuable time manually processing and handling the data.

MonitorPro Implementations

EHS Data have successfully implemented **MonitorPro** with several regulators and regional and county councils in several countries, offering systems to enable them to better manage their environmental data.

UK Local Authorities

Some Local Authorities in the UK have been using **MonitorPro** for several years, predominantly for capturing and managing environmental monitoring data gathered from landfill and contaminated land sites. **MonitorPro** means data collected from multiple sites can all be stored in a central database and this data can then be analysed and reported as required for their environmental permits. This helps councils to proactively manage site permit compliance, which in turn helps ensure the protection of local environments.



New Zealand and Australia Regional Councils

- Multiple regional councils in New Zealand have been using **MonitorPro** for several years to collect environmental quality data associated with rivers, ponds and sewage outfalls.
- In Australia councils have combined **MonitorPro** with a laboratory information management system (LIMS), where **MonitorPro** automatically interacts with LIMS creating a comprehensive overview of all water monitoring in their regions. This makes interpretation and analysis of the data easier and more accurate.

National Regulator: The Environment Agency

The Environment Agency (EA) in England, UK is responsible for the Environmental Protection of a wide range of potentially polluting processes via Environmental Permitting.

As part of these permits, operators are required to capture and submit large quantities of data to ensure they are not adversely affecting the environment and ensure they stay within permit conditions. As a result, a large amount of data needs to be submitted, stored and checked for completeness and compliance by the EA. **MonitorPro** provides a way of automating this data submission and compliance checking process.

MonitorPro also means operators can easily and automatically submit the required data and reports to the EA using predefined report file formats.

