



## MP Field: Advantages of Electronic Field Data Collection

How collecting field data electronically improves collection efficiency and reduces errors

### The problem:

Environmental data collection is a requirement for many environmental regulations, however the collection of this data can be problematic for a number of reasons including:

- The use of paper documents when collecting data:
  - Finding the relevant sections whilst undertaking a site visit is time consuming.
  - Damage may occur to the document during adverse weather conditions.
- Use of paper documents for recording results:
  - Being unable to interpret written information from the field.
  - Missed sample points cause gaps in data collection/report submission delays.
  - Collected data is not automatically validated, so unusual or above compliance limits are not highlighted.
  - Manual forwarding of data to laboratories is required.
- Site navigation issues:
  - Without GPS, having only a map during site monitoring may result in issues finding sample point locations.
- Delay in data availability:
  - Paper records require uploading at a later date and result in delays in further analysis and reporting. These delays can be significant if there are staff absences or large amounts of data to be uploaded.

### The solution: MonitorPro and MP-Field

**MonitorPro** and **MP-Field** provides a range of features which make data collection and further reporting quick and easy.

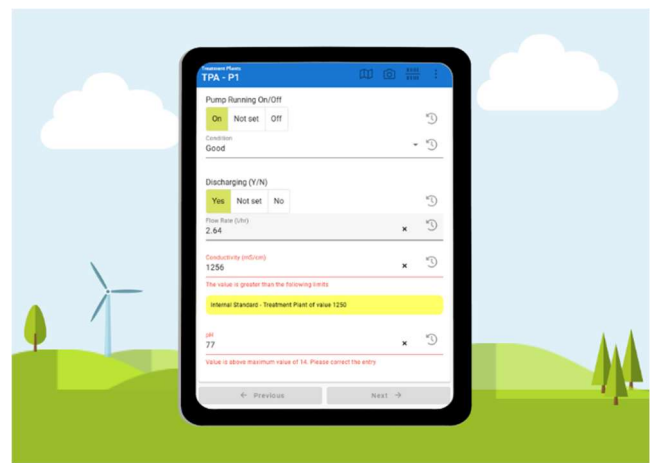


## Monitoring Scheduler

The Monitoring scheduler in **MonitorPro** means you can clearly identify what needs collecting and at what frequency, avoiding unnecessary data collection.

## Automatic data quality check

Data input into **MP-Field** has an auto validation feature based on compliance limits and maximum and minimum values pre-set in **MonitorPro**. If data is above this predefined value a warning message will be displayed, and data cannot be entered. Also, if data input is above a compliance limit, this will be highlighted to the user in the field.

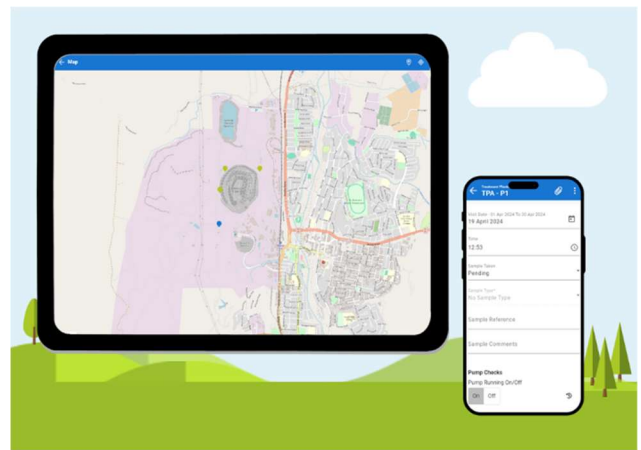


## Multiple input sources

Easily take pictures in the field and upload them to the database with the sample points data or refer to images and documents previously uploaded.

## Built in mapping

Easily navigate to your required sampling locations using **MP-Field's** built in mapping feature.



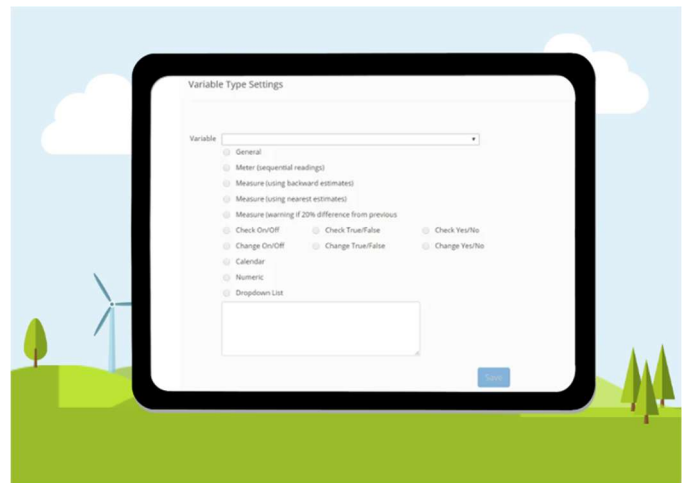


## No missed data points

**MP-Field** highlights where data collection is still required or if a point has been missed.

## Avoid data input errors

Data is captured in the field directly, removing the potential for manual data input errors, and removing the need for notebooks and other devices. The utilisation of drop-down lists and date pickers for data input into **MP-Field** also removes the risk of any data input errors.



## MP-Field and MonitorPro: The perfect solution for your environmental data management

All these advantages highlight that **MP-Field's** digital data collection makes data collection in the field significantly easier and less error prone than manual methods. This saves considerable time and money, and ensures a site can successfully submit reports at required intervals to the necessary agencies, in turn, this avoids any late submission fines or non-compliance issues

