

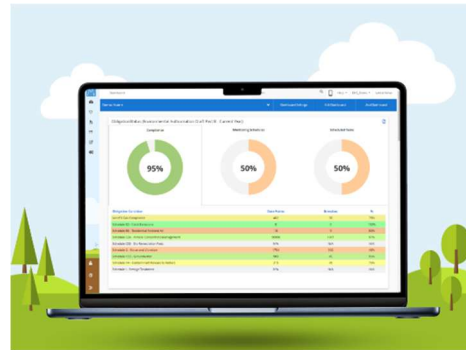


## MP-Web: World Leading Environmental Data Management Software

**MP-Web** is a browser-based application which quickly allows users to share and interact with their data. Users can view, trend, report and enter data via an intuitive and user-friendly interface. **MP-Web** includes a rich set of features:

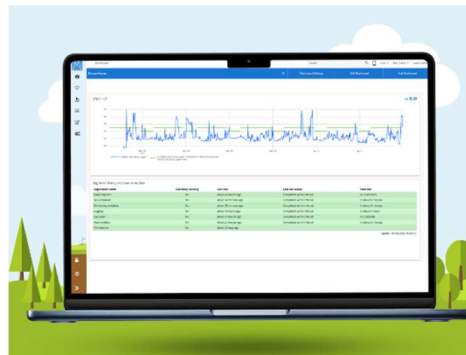
### Manage Obligations

Centralise obligations, permits and policies, and link them to their related conditions and requirements. Managers can see current compliance against obligations at a high level while administrators and technicians can review and manage compliance at a point-by-point level.



### Dashboards

User configurable dashboards enable simple and effective sharing of your data. Report permit/ obligation performance, alerts, maps, and graphical output. Data is automatically refreshed, ensuring the data is always the latest available in the system.

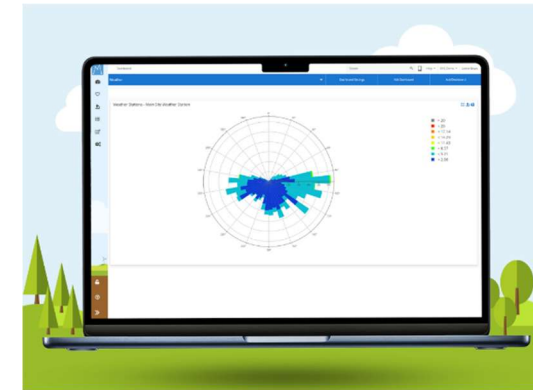


### Security

Secure login and named user accounts enables administrators the ability to tailor individual data access. Provide external stakeholders access to specific elements with roles defining abilities to change or edit data.

### Visualisation

Calendar views, to highlight compliance warnings, tasks and monitoring programmes. Clearly see the status of individual tasks or those associated with a specific obligation. Modern graphical outputs including line, bar and pie charts. Charts can be added to user defined dashboards simply and easily to create real time data displays.



### Email Processor

Link a mailbox and allow **MP-Web** to automatically check emails. Create rules for different data streams and **MP-Web** will automatically strip attachments from emails and import into the database.

### Reporting

Dynamic customisable dashboards showing a variety of widgets, with reports, graphs, and mapping available. A range of standard and custom exports, including common regulatory uploads such as Ontario's MEWS and British Columbia's EMS.



# Having MP-Web ensures:



## Compliance

**MonitorPro** gives peace of mind that you are fully compliant with environmental legislation. Configure early warning systems with suggested actions in case of permit breaches.



## Time Saving

Save time and centralise your obligations, permits and policies, and link them to their related conditions and requirements.



## KPIs

Achieve your specific business goals whilst improving business performance with a range of customised KPIs.



## Sharing

**MP-Web** quickly allows users to share and interact with their environmental data. Users can view, trend, report and enter data via an intuitive and user-friendly interface.



## Integration

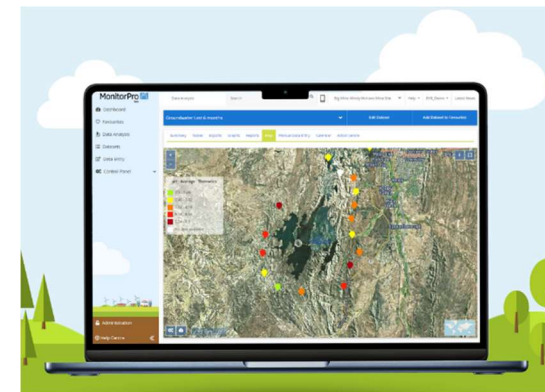
Enables data from many sources to be drawn together and managed coherently including:

- Email.
- Tableau or PowerBi reports.
- Arc Map GIS.
- eCOC.

Automatically pull or push data from other sources without risk of human errors in transcribing.

## Mapping

Powerful mapping and satellite imagery technology that you don't need to be an expert to use. Easily locate and view your sampling points.



## Internationalisation

Fully internationalised browser-based web application. Ideal when **MonitorPro** is deployed on multiple sites or where sites and corporate offices need support in different languages.

## Quality

Quality control is first and foremost with **MonitorPro** as the system is the first MCERTS accredited complete environmental data management solution.



*"I've found that one of the best features is the compliance breach automated emails. There is something very reassuring in knowing that as soon as data makes it into MonitorPro (which can obviously be very rapid with auto importer) you will be notified of any issues without having to go through all the data looking for problems."*

*EHS Data Client*

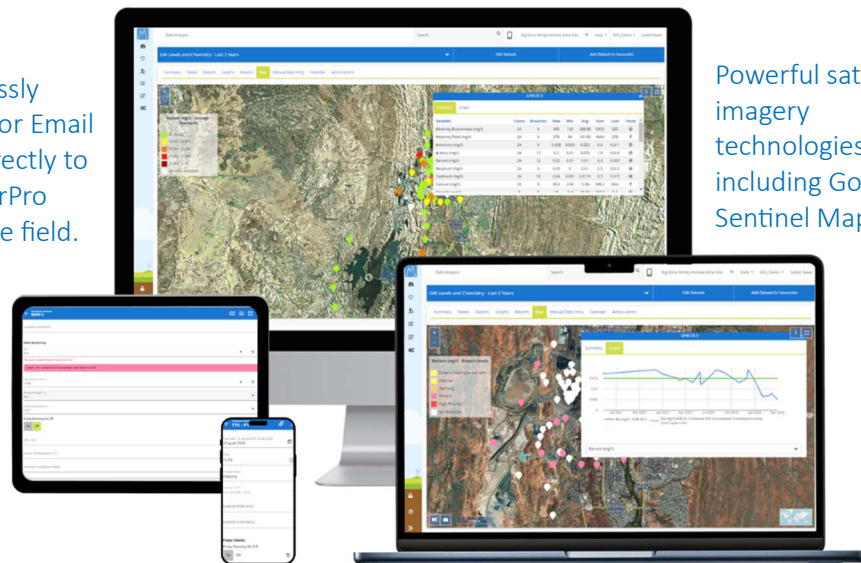


## Why Choose MonitorPro?

**MonitorPro** is a complete and professional environmental data management solution that provides environmental professionals the latest innovative tools to successfully manage their environmental compliance and data collection.

The **MonitorPro** suite of products includes **MP-Web** and **MP-Field** and is trusted by over 3,000 users in over 40 countries worldwide. **MonitorPro** is the first EHS Software solution to receive an MCERTS accreditation from the Environmental Agency.

Seamlessly import or Email data directly to MonitorPro from the field.



Powerful satellite imagery technologies including Google and Sentinel Mapping.

Discover how MonitorPro has helped enhance the productivity of our clients with [our case study section on our website.](#)

## Why Choose EHS Data?

**EHS Data** is the global leader in providing an easy-to-use and efficient solution to manage all environmental and compliance data in one centralised platform. Say goodbye to uncontrolled spreadsheets and manage your environmental data in a modern, flexible software interface.

### Technical Strength

Our experienced team comes from technical and environmental backgrounds with a long track record of using, administering, and developing Environmental and Sustainability Data Management Software

### Flexibility

**MonitorPro** is highly configurable and customisable by the user, providing functionality that is designed to assist environmental professionals in data handling and reporting.

### Trust & Credibility

EHS Data have worked with different organisations from Mining to Local Authorities to Energy Providers, large & small. Our industry knowledge is vast, and our experience allows us to offer the best possible solution for our clients

## Helping clients meet their environmental objectives

**EHS Data** has over 25 years of providing environmental data management systems to organisations worldwide, with implementations ranging from single-site installation to large multi-site corporate applications. Our experienced team have a vast knowledge throughout all industries ranging from mines, utilities, waste management, and local authorities meaning we can offer you the best possible solution that suits your environmental compliance needs.

## Secure and certified

**EHS Data** takes cyber security seriously, and to demonstrate our commitment to this, we have attained both ISO 27001 Certified, Cyber Essentials Certified, and have the MCERTS accreditation.



Certificate Number: 12281-ISM5-001  
ISO 27001