

Key Facts

200+

Clients worldwide.

3,000+

Users worldwide.

25

Years of experience.

MCerts

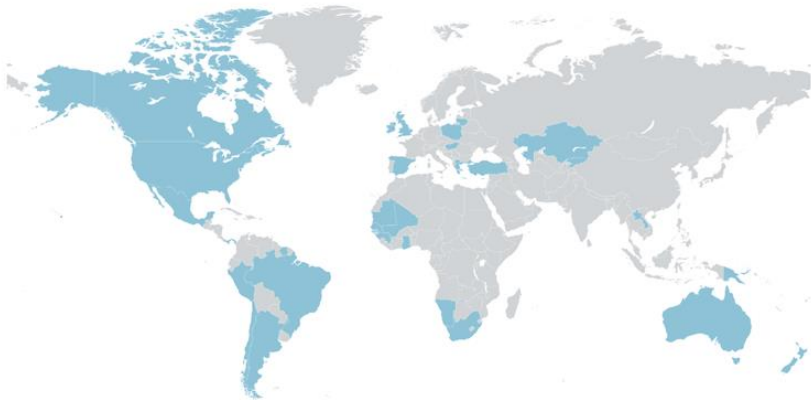
First monitoring software to
receive this quality certification.

MonitorPro: The Smart Approach to Environmental Data Management

MonitorPro is a world-class database management system dedicated to streamline environmental monitoring and reporting. Developed by **EHS Data**, **MonitorPro** has been used in Canada by major mining companies since 2009. During that time, continuous development using the latest technology, coupled with unparalleled customer support, has created an industry leading solution for environmental professionals.

One of the biggest challenges faced by responsible organisations is protecting the environment by reducing environmental impacts, meeting increased regulatory demands while saving on resources. Using the latest technology, **MonitorPro** delivers this plus a comprehensive view of environmental performance across all operations.

MonitorPro is trusted by organisations throughout the world with implementations in Australia, North America, South America, Europe, Asia and Africa.



Environmental Monitoring in Canada

In mining, as in many other industries, a comprehensive environmental strategy is required to ensure that environmental permits are both obtained and maintained. There are various stages throughout a mine's lifespan which have different environmental impacts and resulting management approaches.

Increasingly, Canadian mining companies recognise that careful and detailed management of their environmental impacts is crucial to ensure environmental compliance and avoid the potential fines and site closures which can accompany compliance breaches.

Through effective environmental management the Canadian mining industry is committed to contributing to the sustained growth and prosperity of current and future generations.

MonitorPro has an extremely flexible reporting engine enabling **EHS Data** to develop specific reporting templates, including Ontario's MEWS and British Columbia's EnMoDS which are electronically generated **MonitorPro**.





Permits

Permits are an essential requirement for a mining operation, these impose conditions which force an operation to manage its environmental impacts responsibly. There are various regulatory bodies around the world who grant permits. Once granted, various regulations including site monitoring/ environmental data collection and report submission will be attached to the permit to ensure compliance is maintained.

Mine Stage

1. Exploration
2. Construction
3. Operation
4. Close Aftercare

Environmental Impacts

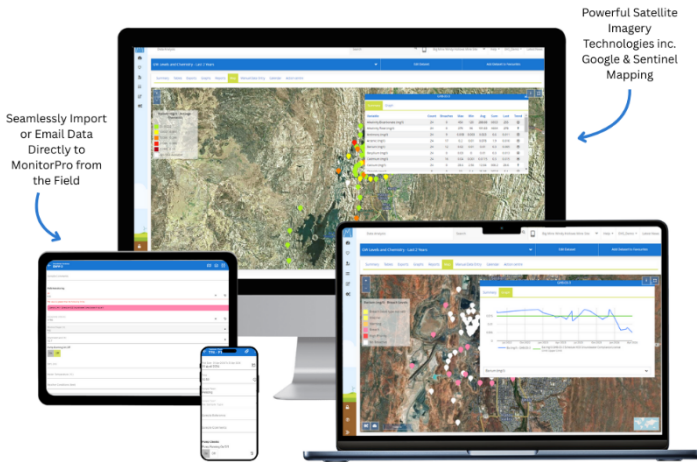
Vegetation clearance, impacts on cultural heritage, ground disturbance, water management (e.g. for drilling), spills and environmental accidents, loss and damage to topsoil required for eventual rehabilitation.

Land disturbance, ground and surface water impacts, dust, waste management, noise.

Impacts on air quality, noise, ground and surface water impacts, water use, waste rock management and resulting erosion, chemical use, environmental incidents (e.g. spills), waste management.

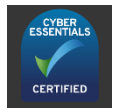
Seepage and toxic effects from waste rock and tailings; rehabilitation of the site.

MonitorPro: The Experts in Environmental Data Management Systems



Effortless Environmental Compliance with MonitorPro

- Automatic validation of data.
- Easy field data collection with **MP-Field**.
 - Customisable dashboards.
 - Highly configurable.
 - Monitoring and Task Scheduler.
 - Import Email data directly into **MonitorPro**.
 - Powerful mapping and satellite imagery technology.
 - Flexible and customisable reporting.
 - Advanced graphing/calculation tools.
 - Integration with external applications.
 - Secure and Certified.



MonitorPro has been used by Natural Resource companies in Canada since 2009. Regulation in the region means large volumes of data needs to be collected and reported to ensure detailed and accurate compliance, and **MonitorPro** provides the perfect solution.

While working closely with our clients during this time the continuous development of **MonitorPro** has created an industry leading solution for environmental professionals. The **MonitorPro** community in Canada has now grown to over 20 companies involved in the Natural Resources Industry and is actively used at more than 34 sites.

"The implementation of MonitorPro is part of our commitment of risk management towards our goal of zero impact to the local community and environment. MonitorPro helps to manage the varied data of our operations in an efficient and auditable manner."

Environmental Manager - Canadian Mining Client

MonitorPro's complex compliance functionality also complements and facilitates analysis for Canada's federal, provincial, and site-specific limit compliance frameworks for water and soil, allowing users to be alerted immediately on data being committed to the system.

This includes MDMER (Metal and Diamond Mining Effluent Regulations), the BC Water Quality Guidelines, CSR (Contaminated Site Regulation) Soil Standards, Ontario PWO (Provincial Water Quality Objectives), and many others. Complex compliance allows for dynamic (moving) limits (e.g. calculated based on the result of analyses), conditional limits (e.g. applying only in certain circumstances), time-based or seasonal limits, and other complex scenarios that jurisdictions require.




Helping Canadian Clients Meet their Environmental Objectives

With trusted, flexible solutions developed around the demands of mining professionals in Canada, our team will have the right solution for you. Over the years we've worked on many projects saving clients time, simplifying their reporting and providing solutions to keep their data secure.

Working alongside some of the biggest corporate enterprises in Canadian mining, providing the best solution to manage their environmental accounting, **MonitorPro** is a comprehensive environmental accounting process, which is highly configurable with incredible flexibility and scalability.



Canadian MonitorPro Locations

 Mine sites using **MonitorPro**

